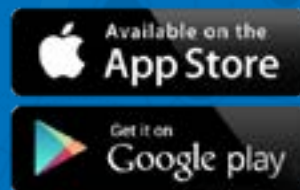


 **AIPHONE**®

Providing Peace of Mind



Wi-Fi Technology



JO Series with smartphone connectivity

J0 Series with smartphone connectivity. Enhanced convenience and security for your home and office.



J0-1MDW

- Easy operation by 7-inch touch screen
- Total hands-free communication
- Zoom and wide screen

7inch touch
LCD screen

Video Recording

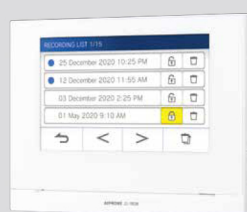
Record visitors even when not able to answer calls. View the recordings from the master station or your smartphone.

Video memory

- Internal memory : 10 calls(max)
- SD card : 1,000 calls(max)



View recorded calls anywhere



J0-1MDW



micro SDHC
(4GB~32GB)











Smartphone

1 × 2 × 8
 Door Room Smartphone



Touch screen operation

-  **Smartphone connection**
Control whether calls are forwarded to mobile devices.
-  **Notifications**
Confirm system updates and other important notifications.
-  **Play**
Play and manage recorded calls.
-  **Monitor**
Monitor your door.

-  **Settings**
Manage system settings.
-  **Door release**
Operate the electric lock connected to the master station.
-  **Option output**
Control external devices connected to the master station.
-  **Talk**
Communicate with the door station.

Door Station Options

Select from 2 different styles. All options can handle tough weather conditions.

 JO-DV	 ... Dust and moisture resistant	 JO-DVF	 ... Dust and moisture resistant
	 ... Ruggedized against vandalism		 ... Ruggedized against vandalism
	 ... ZINC material		 ... STAINLESS STEEL material
	 ... Nighttime LED		 ... Nighttime LED

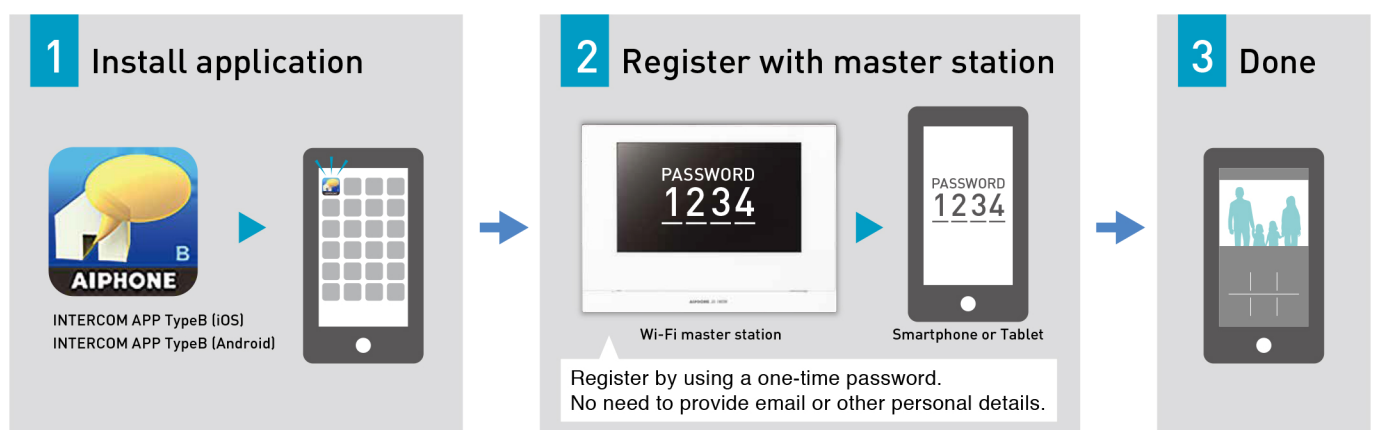
Smartphone Application provides connectivity everywhere.



Have the functionality of the master station in your pocket

- Answer calls from the door station.
- Monitor the door station.
- Operate electric locks while answering a call.
- Control external devices while answering a call.
- Switch between speakerphone mode and telephone mode as necessary.
- Zoom in and zoom out functions.

Connect your smartphone in 3 simple steps

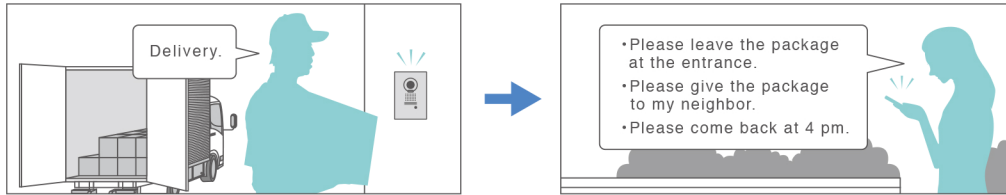


Usage Example

Answer calls anywhere inside or outside your home



Handle deliveries when not at home



Open your door from anywhere

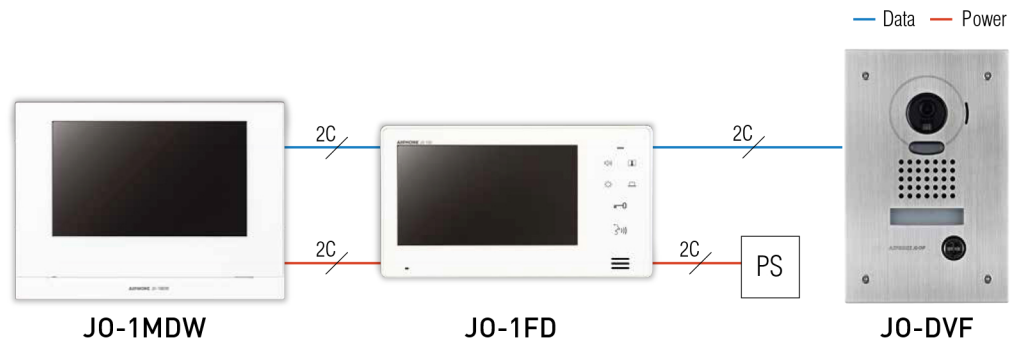


Notes

- Connect your JO-1MDW master station to a commercially available Wi-Fi router that is connected to the Internet.
- Ensure that you install the master station near your Wi-Fi router and that the wireless connection is not obstructed.
- Ensure that your internet connection for both the master station and your mobile device meets the minimum requirements for using the application (1.3MBs for download and 1.3MBs for upload).
- The application cannot be used for emergency calls or communication.
- All internet connection fees and data usage fees are the responsibility of the user.
- Up to 8 mobile devices can be registered to one master station.

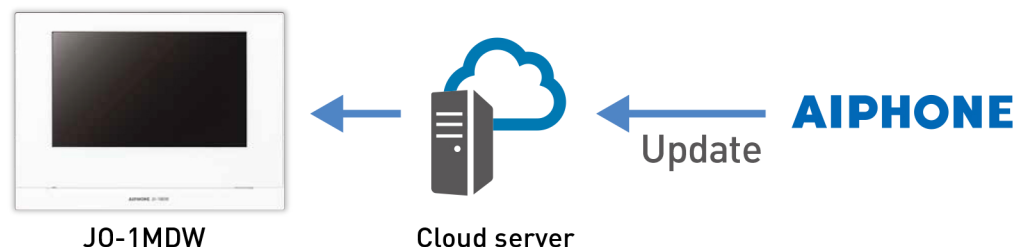
Simple installation

Connect all units in the system with just 2 wires.

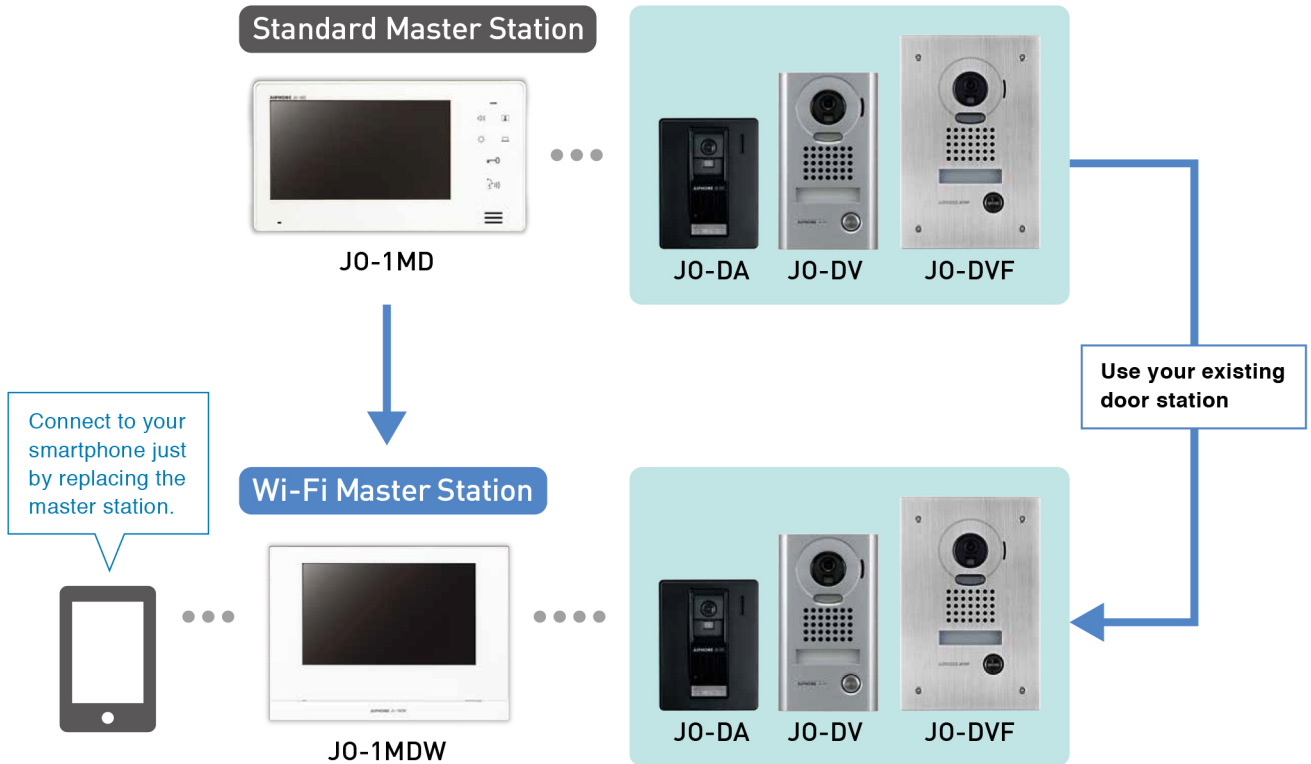


Automatic updates

Automatic updates ensure you always have the latest functionality and security.

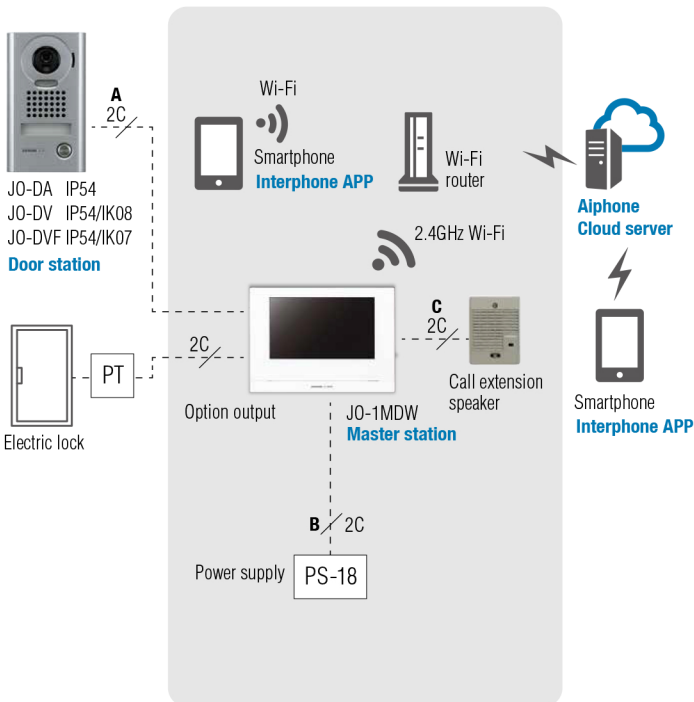


Compatible with existing JO series.

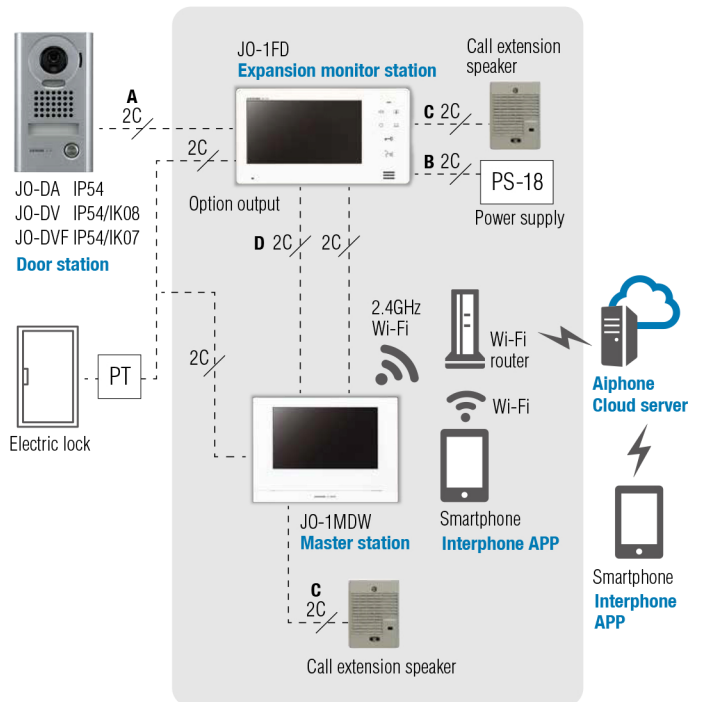


System Configuration

• Installations Using a Single Room Station



• Installations Using Two Room Stations



	∅ 0.65mm	22 AWG	∅ 0.8-1.2mm	20-16 AWG
A	50m	165'	100m	330'
B	5m	16'	10m	33'
C	50m	165'	150m	490'
D	50m	165'	100m	330'

PS18:PS-1820

Wi-Fi Master Station

Master station



JO-1MDW

Boxed sets



JOS-1AW: JO-1MDW, JO-DA
 JOS-1VW: JO-1MDW, JO-DV
 JOS-1FW: JO-1MDW, JO-DVF

Standard Master Station

Master station



JO-1MD

Boxed sets



JOS-1A: JO-1MD, JO-DA
 JOS-1V: JO-1MD, JO-DV
 JOS-1F: JO-1MD, JO-DVF

Door station



JO-DV



JO-DVF

Expansion monitor station



JO-1FD

Specifications

JO-1MDW

Power source	18V DC, Supplied from a power supply
Current consumption	450mA(max.) 80mA(standby.)
Video monitor	7" TFT LCD touch screen
Resolution	800×480 (approx.384,000 pixels)
Type of communication	Open voice hands-free auto-voice actuation or Touch-to-talk communication
Ambient temperature	0~40°C
Wireless LAN interface	IEEE802.11b/g/n
Video memory	Internal memory: 10 calls(max.) (10 seconds/call) SD card: 1,000 calls(max.)(10 seconds/call)
Protect video	Internal memory: 5 calls(max.) micro SDHC card: 100 calls(max.)
SD card	micro SDHC card: 4GB-32GB
Door release contact	24V AC/DC, 1A (N/O dry closure contact)
Option button output	24V AC/DC, 1A (N/O dry closure contact)
Mounting	Surface wall mount
Material	Unit case: Self-extinguishing PC + ABS resin Surface panel: Glass
Weight	Approx.620g

JO-1MD

Power source	18V DC, Supplied from a power supply
Power consumption	410mA(max.) 24mA(standby.)
Video monitor	7 inch TFT color LCD
Pixels	300,000 pixels (approx.)
Type of communication	Open voice hands-free auto-voice actuation or Press-to-talk communication
Ambient temperature	0~40°C
Door release contact	24V AC/DC, 0.5A (N/O dry closure contact)
Option button output	24V AC/DC, 0.5A (N/O dry closure contact)
Mounting	Surface wall mount
Material	Unit case: Self-extinguishing ABS resin Surface panel: Polycarbonate
Weight	Approx.470g

JO-1FD

Power source	18V DC, Supplied from a power supply
Power consumption	420mA(max.) 38mA(standby.)
Video monitor	7 inch TFT color LCD
Pixels	300,000 pixels (approx.)
Type of communication	Open voice hands-free auto-voice actuation or Press-to-talk communication
Ambient temperature	0~40°C
Door release contact	24V AC/DC, 0.5A (N/O dry closure contact)
Option button output	24V AC/DC, 0.5A (N/O dry closure contact)
Mounting	Surface wall mount
Material	Unit case: Self-extinguishing ABS resin Surface panel: Polycarbonate
Weight	Approx.480g

JO-DV

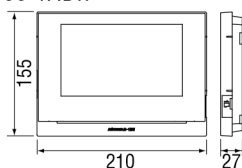
Power source	Supplied from Master monitor station, Expansion monitor station, or Guard station
Type of communication	Open voice hands-free communication
Camera	1/4 inch color CMOS
Ambient temperature	-20~+60°C
Mounting	Surface wall mount
Material	Front panel: Zinc die cast. Main unit: Self-extinguishing PC + ABS resin
Weight	Approx.650g
IP rating	IP54
IK rating	IK08

JO-DVF

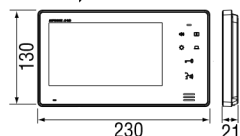
Power source	Supplied from Master monitor station or Expansion monitor station
Type of communication	Open voice hands-free communication
Camera	1/4 inch color CMOS
Ambient temperature	-20~+60°C
Mounting	Flush mount
Electrical box	Not used/(Mounts on built-in back box)
Material	Front panel: Stainless steel. Main unit: Self-extinguishing PC + ABS resin
Weight	Approx.580g
IP rating	IP54
IK rating	IK07

Unit Dimensions

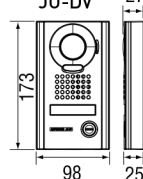
JO-1MDW



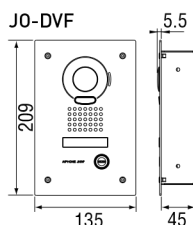
JO-1MD, JO-1FD



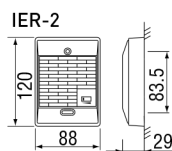
JO-DV



JO-DVF

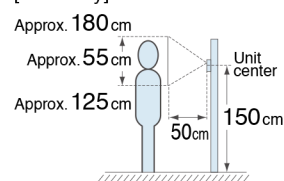


IER-2

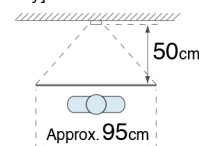


Mounting positions and image view area

[Vertically]



[Horizontally]





For more information on Aiphone solutions available in the UK,
visit www.aiphone.co.uk or call us on **0207 507 6250**

 **AIPHONE**®
Providing Peace of Mind

Follow us on



@Aiphone UK