

IX System

IP network-compatible intercom

Video Door Station (IX-DA) Audio Only Door Station (IX-BA)

Web Setting Manual

Software version 2.00 or later

Before configuring and using the system, read Setting Manual and Operation Manual (PDF) carefully.

*For the installation and connection of each device, refer to Installation Manual.

Important

- **Begin installation after reading and understanding the procedures for system configuration.**
- **The setting data should be backed up and stored in a safe location after configuration is complete.**


The illustrations and images in this manual may vary from the actual ones.



Table of contents

System settings: For the entries for the Web settings, refer to "6. System settings list" ➤ P.44.

- Introduction..... 4**
 - 1. Notational symbols in this manual 5
 - 2. Device Type 6
 - 3. Product manuals 7
 - 4. Configuring the system..... 8
 - 5. Flowcharts for configuring the system 9
- Startup and Configuration 35**
 - 1. System requirements 36
 - 2. Part names 37
 - 3. Connecting to a PC 39
 - 4. Log in to the Web server of the station to be configured 40
 - 5. Setting window 42
 - 5.1. How to configure..... 43
 - 6. System settings list..... 44
- Configuring the station 49**
 - 1. Station Information 50
 - 1.1. Identification 50
 - 1.2. ID and Password 51
 - 1.3. Language..... 52
 - 1.4. Time..... 53
 - 2. Network Settings 55
 - 2.1. IP Address 55
 - 2.2. DNS 59
 - 2.3. SIP 60
 - 2.4. Multicast Address (Video Door Station only) 60
 - 2.5. Video (Video Door Station only) 61
 - 2.6. Audio 65
 - 2.7. Packet Priority 67
 - 2.8. NTP 69
 - 3. System Information 71
 - 3.1. Custom Sound Registry..... 71
 - 4. Contact / Audio Output Settings 73
 - 4.1. Contact Input 73
 - 4.2. Output Specifications..... 74



5. Call Settings	76
5.1. Called Stations	76
5.2. Call Origination	78
6. Function Settings.....	80
6.1. Door Release Settings.....	80
6.2. Contact Input Call.....	82
6.3. Paging Settings	85
6.4. Paging Output Setting	86
6.5. E-mail Settings	87
6.6. CGI Integration	93
6.7. SIF Integration	94
7. Station Hardware Settings.....	95
7.1. Volume Settings	95
7.2. Communication Settings.....	95
7.3. Camera Settings (Video Door Station only).....	96
8. Maintenance	98
8.1. Firmware Update	98
8.2. Initialization	99
8.3. Setting File Management.....	100
8.4. System Log.....	102
9. Viewing video from Door Station with 3rd party products (ONVIF)	103




Introduction

This manual describes how to set up Door Station through a web browser.

IX system offers a separate manual for Installation, Settings, and Operations. Refer to the relevant manual.

1. Notational symbols in this manual

The following symbols identify important information concerning operational procedures.

 Caution	Indicates important instructions that should be observed or avoided. Please read and understand before proceeding.
 Important	Indicates what should be known before operation. Please read and understand before proceeding.
 Point	Indicates tips and additional information for the operation.

- Page references are shown as "> **P. XX.**"
- The screen shots in this manual may vary from the actual screens shown.

2. Device Type

The stations are shown as below.




Device type	Example Model Names
Master Station	IX-MV
Video Door Station	IX-DA, IX-DF, IX-DF-HID-I* ¹ , IX-DF-HID* ¹ , IX-DF-2RA* ¹ , IX-DF-PI* ² , IX-DF-P* ²
Audio Only Door Station	IX-BA, IX-SS, IX-SS-2RA* ¹

*¹ North America Only

*² Except North America

3. Product manuals

Read the Installation Manual, Setting Manual, and Operation Manual. Have the person who installs or configures the product refer to the relevant manuals.

	Installation Manual (Comes with Master Station or Door Station.) Refer to when installing and connecting Master Station and Door Station. (For installer)
	Quick Start Programming Guide (Comes with Master Station.) Describes how to configure a basic IX system. (For system administrator)
<p>DVD-ROM</p>  <p>This comes with Master Station.</p>	IX Support Tool Setting Manual (Electronic format (PDF file).) Describes how to configure and maintain the system using IX Support Tool. (For system administrator)
	IX Master Station Operation Manual (Electronic format (PDF file).) Describes how to operate Master Station. (For user)
	IX Door Station Operation Manual (Electronic format (PDF file).) Describes how to operate Door Station. (For user)
	IX Master Station Web Setting Manual (Electronic format (PDF file).) Describes how to set up Master Station for the Internet connection. (For system administrator)
	IX Door Station Web Setting Manual (Electronic format (PDF file).) Describes how to set up Door Station for the Internet connection. (For system administrator)
	IX-MV Installation Manual (Electronic format (PDF file).) Describes how to install Master Station. (For system administrator and Installer)
	IX-DA, IX-BA Installation Manual (Electronic format (PDF file).) Describes how to install Door Station. (For system administrator and Installer)
	Quick Start Programming Guide (Electronic format (PDF file).) Describes how to configure a basic IX system. (For system administrator)

4. Configuring the system

After installing and connecting all stations, the system will need to be fully configured before it will be operational.

IX system can be configured in one of the two methods below. Choose one method. Using the IX Support Tool is the recommended method.

(1) Configure the system using the "IX Support Tool" application

- Install the application on a PC and use to create the configuration for all stations.
- Search for IX stations on the network; assign and upload configuration data for the system.
- Monitor the system for failures.

For more detail, refer to IX Support Tool Setting Manual.

(2) Configure each station through a Web browser (Web configuration)

- Access each station through a Web browser, and configure each station individually.
- When using the Web browser method, each station must be configured separately.
- When configuring the system through a browser, the IX Support Tool cannot be used.

Important

- **Once the system has been configured through a browser, the settings cannot be transferred to IX Support Tool. The IX Support Tool is recommended to manage settings.**
- **If the settings configured with IX Support Tool are altered through a browser, some items may not be correctly updated within the IX Support Tool data.**

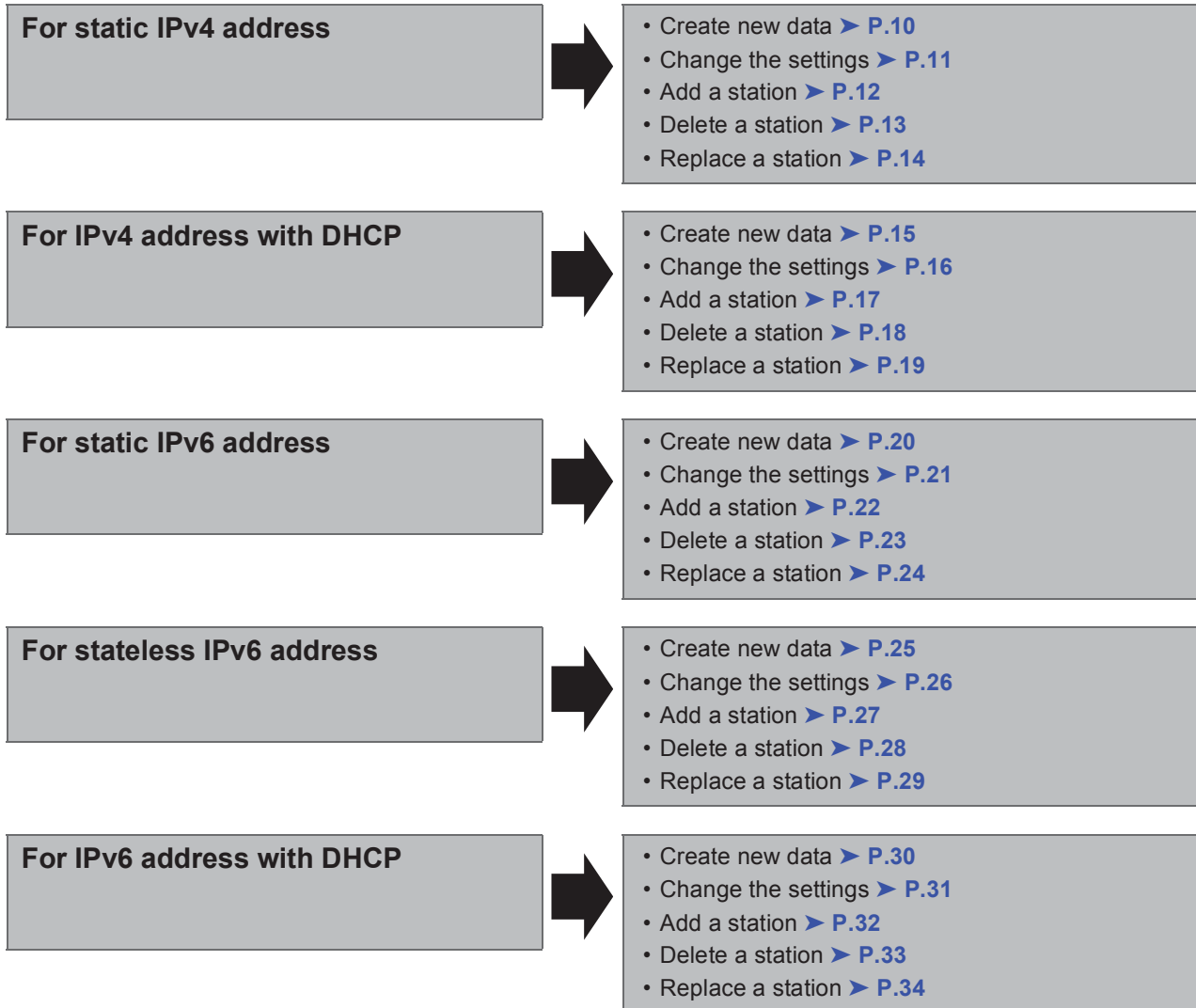
5. Flowcharts for configuring the system

When configuring the system through a browser, follow the flowchart that fits the application.

Save the settings after configuring the system. Otherwise, it may become impossible to restore the settings after maintenance or after-sales servicing.

Flowcharts are for configuration through a Web browser.

When configuring the system with Support Tool, refer to IX Support Tool Setting Manual.



■ For static IPv4 address

● Create new data

Use flowchart to create new configuration, e.g., when installing a new system.

1. Connect PC to the station to be configured.

The default IP address of the stations is 192.168.1.160. Ensure the PC IP address is within the proper domain. Connect stations one at a time to avoid IP address conflict.

"3. Connecting to a PC" ➤ [P.39](#)




2. Log in to the Web server of the station.

"4. Log in to the Web server of the station to be configured" ➤ [P.40](#)



3. Set "1.3. Language" ➤ [P.52](#).

Click  to update the settings.



4. Configure the station.

"Configuring the station" ➤ [P.49](#)



5. Configure other stations in the same manner.

For Master Station configuration, refer to IX Master Station Web Setting Manual.



6. Done.

Important

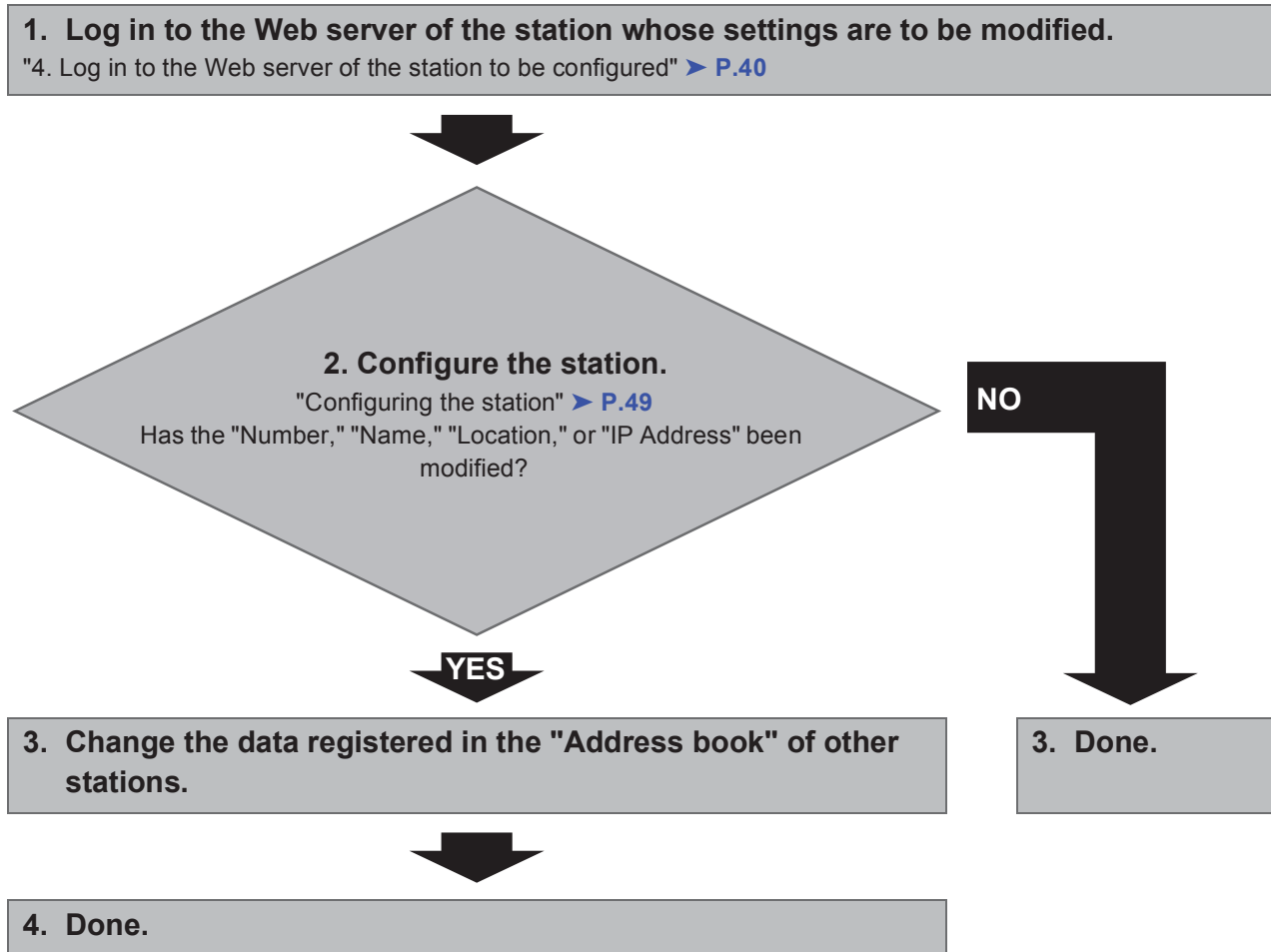
Save the settings after configuring the system.

Refer to "8.3. Setting File Management" ➤ [P.100](#).

If the setting file is lost, station settings will need to be reconfigured.

■ To change the settings (For static IPv4 address)

Use flowchart to change the settings.



Important

Save the settings after configuring the system.

Refer to "8.3. Setting File Management" > P.100.

If the setting file is lost, station settings will need to be reconfigured.

● **To add a station (For static IPv4 address)**

Use flowchart to add a station.

1. Connect PC to the station to be added.

The default IP address of the stations is 192.168.1.160. Ensure the PC IP address is within the proper domain. Connect stations one at a time to avoid IP address conflict.

"3. Connecting to a PC" ➤ [P.39](#)




2. Log in to the Web server of the station to be added.

"4. Log in to the Web server of the station to be configured" ➤ [P.40](#)



3. Set "1.3. Language" ➤ [P.52](#).

Click  to update the settings.



4. Configure the station.

"Configuring the station" ➤ [P.49](#)



5. Register the data of the added station to the "Address book" of the other stations.



6. Done.

Important

Save the settings after configuring the system.

Refer to "8.3. Setting File Management" ➤ [P.100](#).

If the setting file is lost, station settings will need to be reconfigured.

- **To delete a station (For static IPv4 address)**

Use flowchart to delete a station.

1. Delete the station from the "Address book" of all other stations.

Caution

If a page is placed without deleting the station from the "Address book", the operation may be delayed.



2. Done.

Important

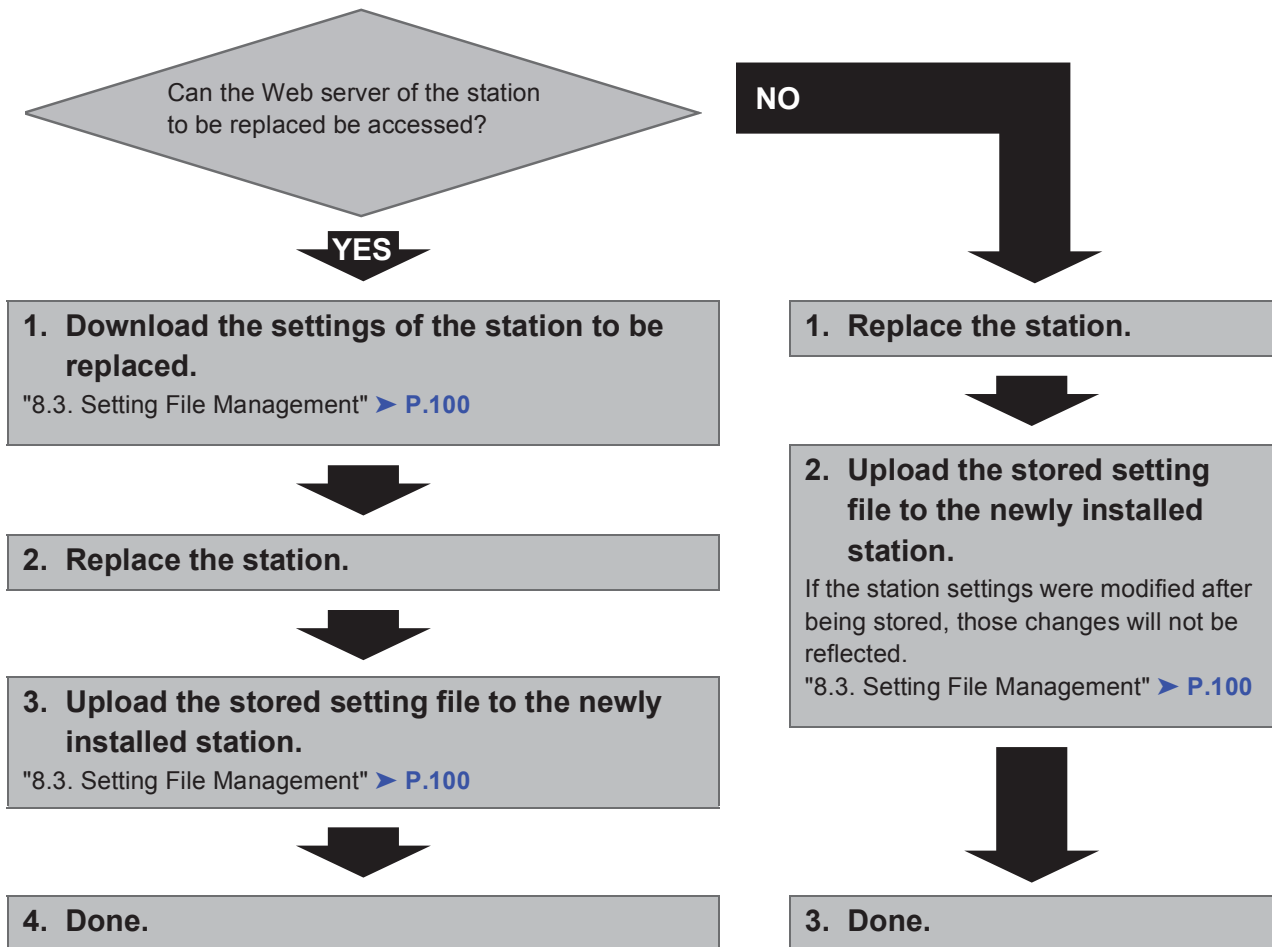
Save the settings after configuring the system.

Refer to "8.3. Setting File Management" ➤ [P.100](#).

If the setting file is lost, station settings will need to be reconfigured.

- **To replace a station (For static IPv4 address)**

Use flowchart to replace a station.

**Important**

Save the settings after configuring the system.

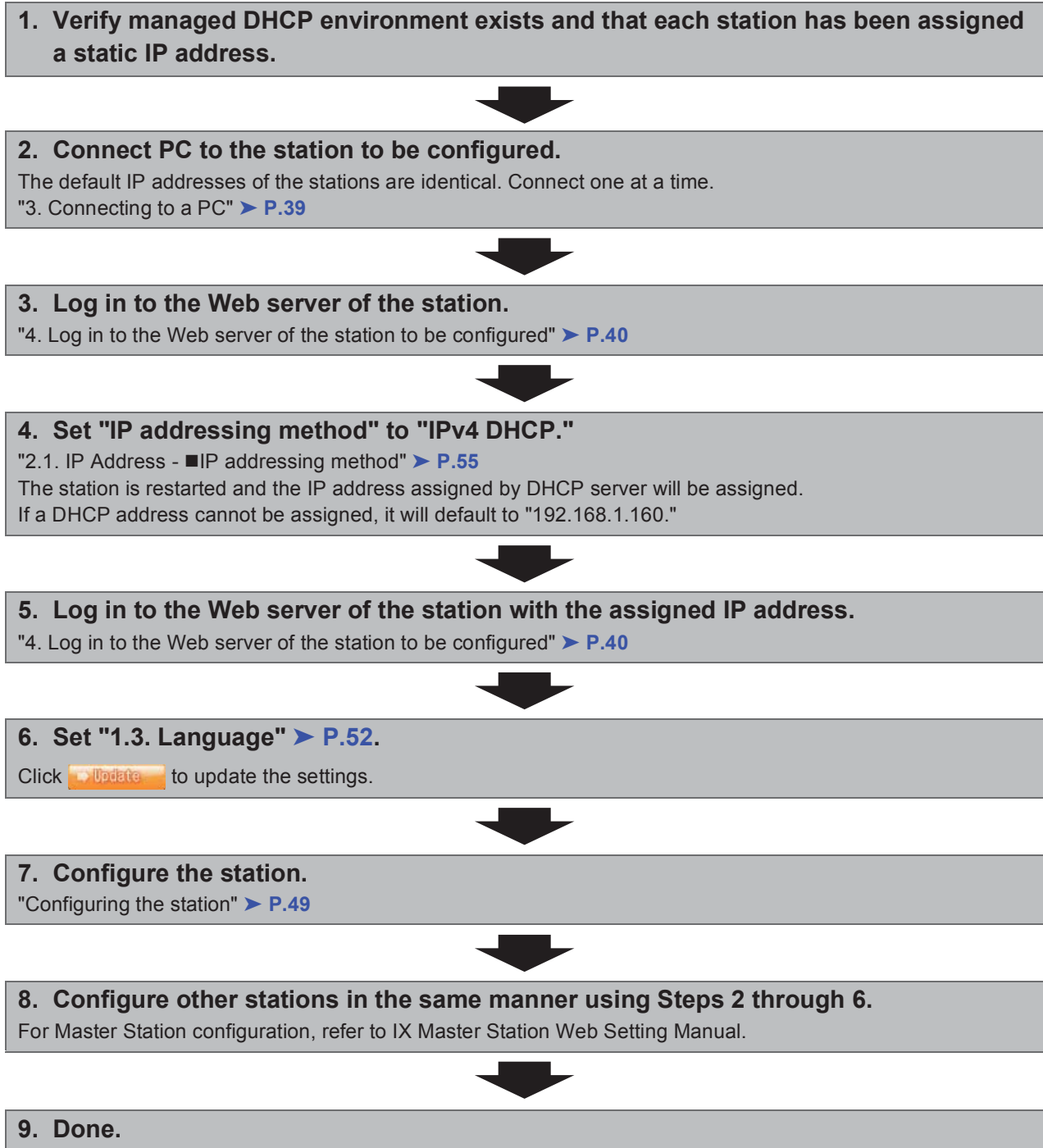
Refer to "8.3. Setting File Management" > P.100.

If the setting file is lost, station settings will need to be reconfigured.

■ For IPv4 address with DHCP

● Create new data

Use flowchart to create new configuration, e.g., when installing a new system.

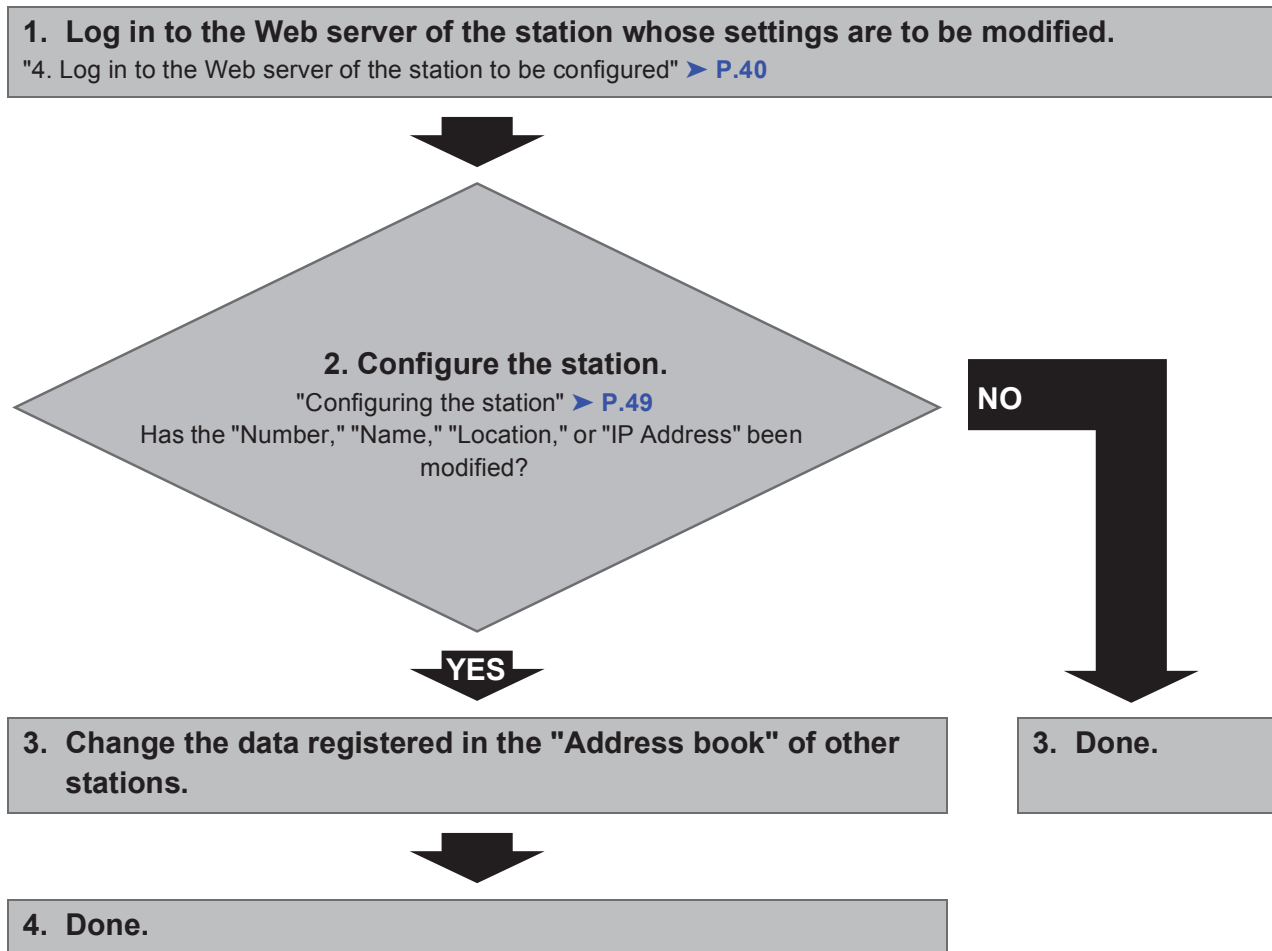


Important

- Due to the architecture of the IX system, DHCP configuration is only recommended for network environments utilizing managed (static) IP address leasing.
- Save the settings after configuring the system.
Refer to "8.3. Setting File Management" > P.100.
If the setting file is lost, station settings will need to be reconfigured.

- **To change the settings (For IPv4 address with DHCP)**

Use flowchart to change the settings.

**Important**

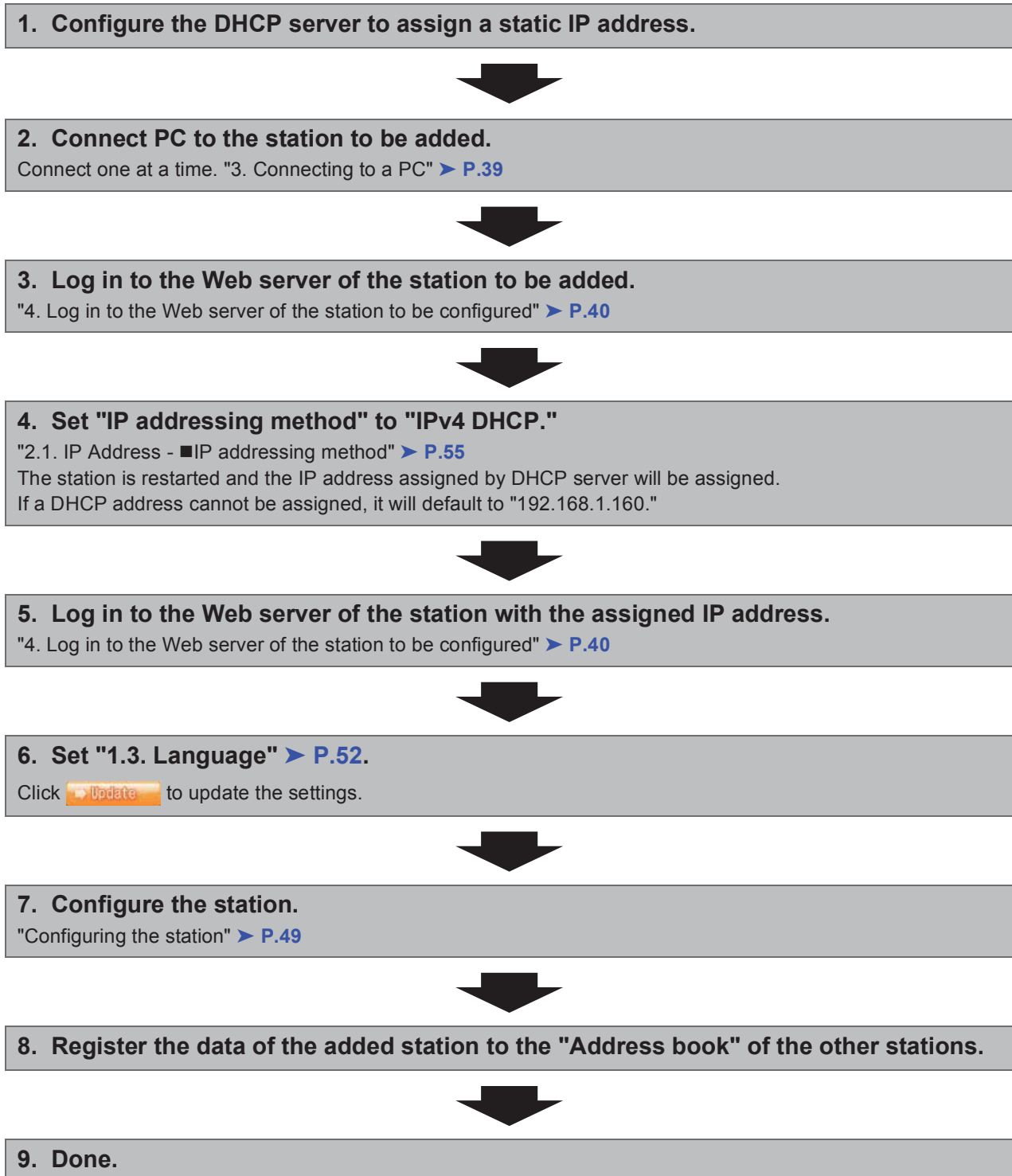
Save the settings after configuring the system.

Refer to "8.3. Setting File Management" > P.100.

If the setting file is lost, station settings will need to be reconfigured.

● **To add a station (For IPv4 address with DHCP)**

Use flowchart to add a station.



Important

Save the settings after configuring the system.

Refer to "8.3. Setting File Management" > P.100.

If the setting file is lost, station settings will need to be reconfigured.

- **To delete a station (For IPv4 address with DHCP)**

Use flowchart to delete a station.

1. Delete the station from the "Address book" of all other stations.

Caution

If a page is placed without deleting the station from the "Address book", the operation may be delayed.



2. Done.

Important

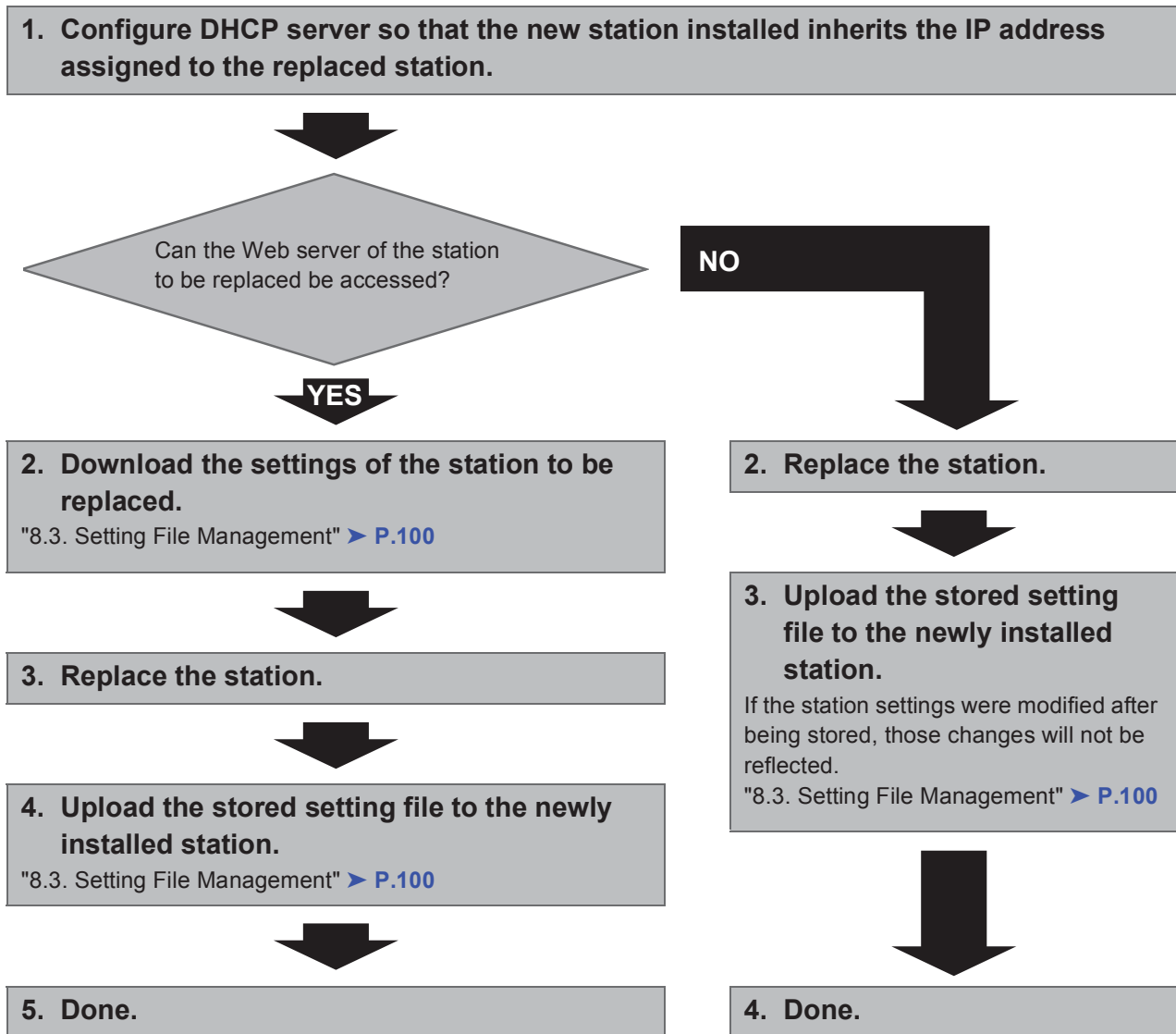
Save the settings after configuring the system.

Refer to "8.3. Setting File Management" ➤ [P.100](#).

If the setting file is lost, station settings will need to be reconfigured.

- **To replace a station (For IPv4 address with DHCP)**

Use flowchart to replace a station.

**Important**

Save the settings after configuring the system.

Refer to "8.3. Setting File Management" > P.100.

If the setting file is lost, station settings will need to be reconfigured.

■ For static IPv6 address

● Create new data

Use flowchart to create new configuration, e.g., when installing a new system.

1. Connect PC to the station to be configured.

The default IP addresses of the stations are identical. Connect one at a time.

"3. Connecting to a PC" > [P.39](#)



2. With default IPv4 address (192.168.1.160), log in to the Web server of the station to be configured.

"4. Log in to the Web server of the station to be configured" > [P.40](#)



3. Set "IP addressing method" to "Static IPv6" and configure "IPv6 Address."

"2.1. IP Address" > [P.55](#)

The station will be restarted with the assigned IPv6 address.



4. Configure IPv6 addresses for other stations in the same manner using Steps 1 through 3.




5. Log in to the Web server of each station with IPv6 address.

"4. Log in to the Web server of the station to be configured" > [P.40](#)



6. Set "1.3. Language" > [P.52](#).

Click  to update the settings.



7. Configure the station.

"Configuring the station" > [P.49](#)

For Master Station configuration, refer to IX Master Station Web Setting Manual.



8. Done.

Important

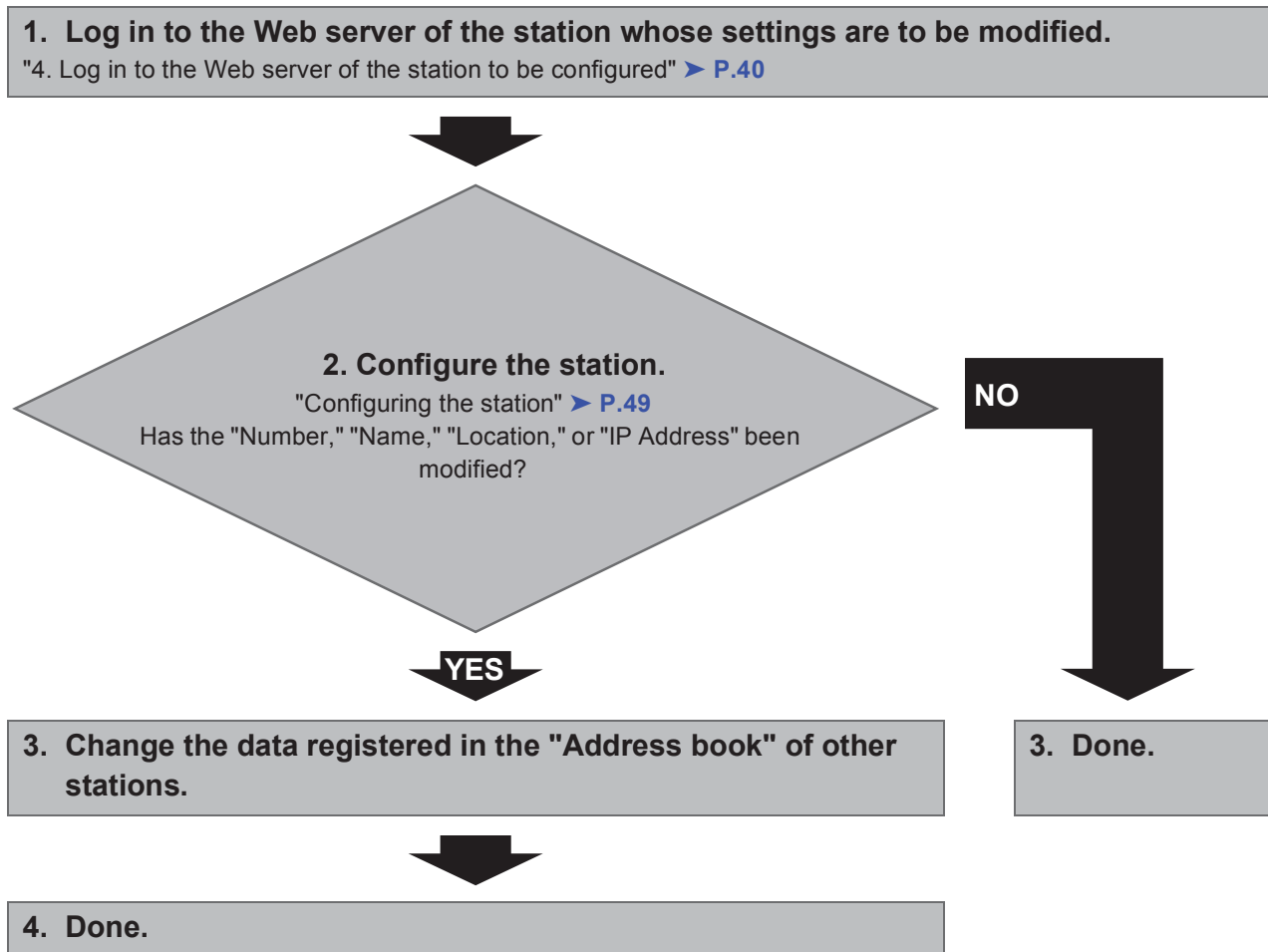
Save the settings after configuring the system.

Refer to "8.3. Setting File Management" > [P.100](#).

If the setting file is lost, station settings will need to be reconfigured.

- **To change the settings (For static IPv6 address)**

Use flowchart to change the settings.

**Important**

Save the settings after configuring the system.

Refer to "8.3. Setting File Management" > P.100.

If the setting file is lost, station settings will need to be reconfigured.

● **To add a station (For static IPv6 address)**

Use flowchart to add a station.

1. Connect PC to the station to be added.

Connect one at a time. "3. Connecting to a PC" > [P.39](#)



2. With default IPv4 address (192.168.1.160), log in to the Web server of the station to be added.

"4. Log in to the Web server of the station to be configured" > [P.40](#)



3. Set "IP addressing method" to "Static IPv6" and configure "IPv6 Address."

"2.1. IP Address" > [P.55](#)

The station will be restarted with the assigned IPv6 address.




4. Log in to the Web server of the added station with IPv6 address.

"4. Log in to the Web server of the station to be configured" > [P.40](#)



5. Set "1.3. Language" > [P.52](#).

Click  to update the settings.



6. Configure the station.

"Configuring the station" > [P.49](#)



7. Register the data of the added station to the "Address book" of the other stations.



8. Done.

Important

Save the settings after configuring the system.

Refer to "8.3. Setting File Management" > [P.100](#).

If the setting file is lost, station settings will need to be reconfigured.

● **To delete a station (For static IPv6 address)**

Use flowchart to delete a station.

1. Delete the station from the "Address book" of all other stations.

Caution

If a page is placed without deleting the station from the "Address book", the operation may be delayed.



2. Done.

Important

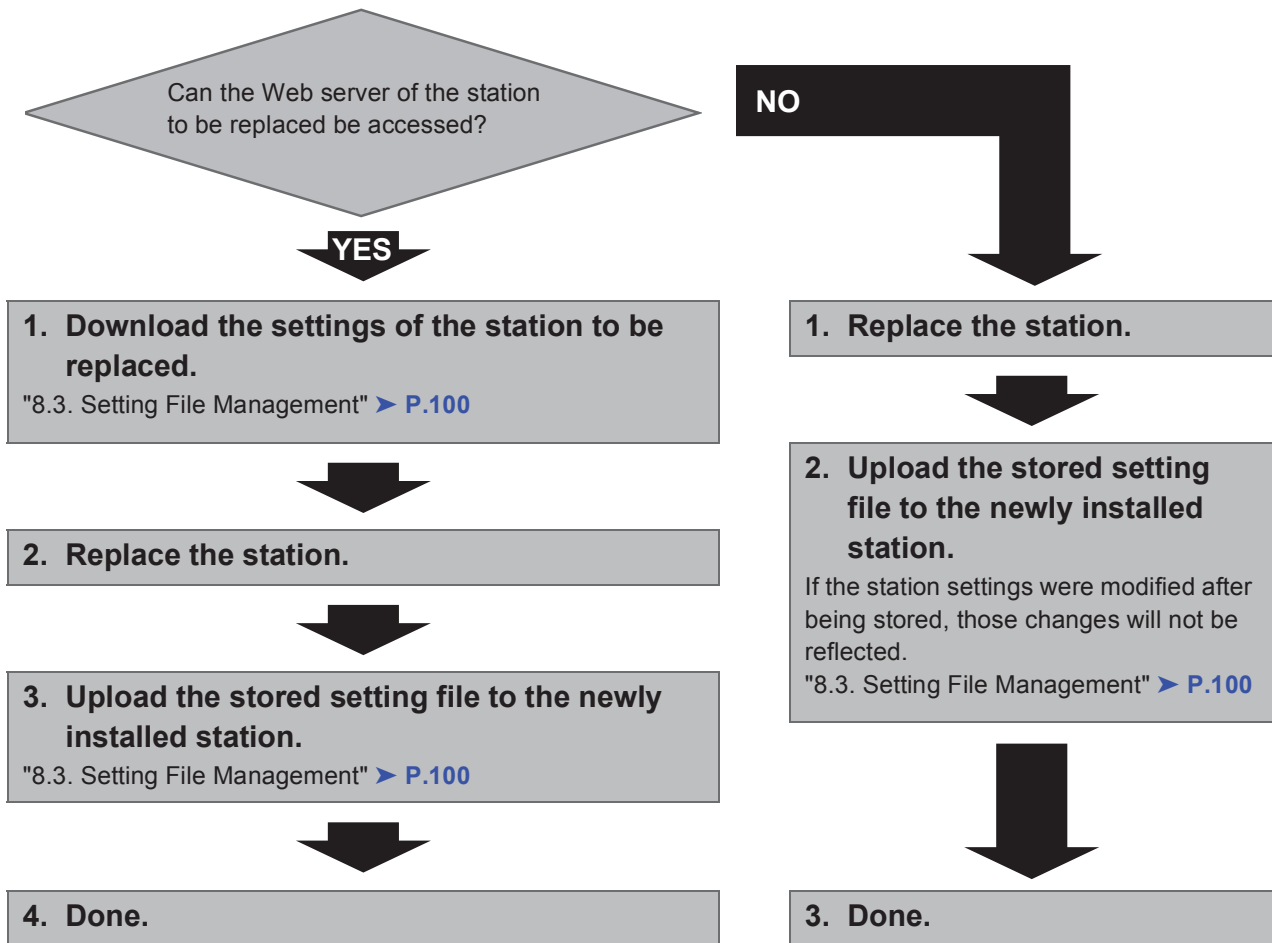
Save the settings after configuring the system.

Refer to "8.3. Setting File Management" ➤ [P.100](#).

If the setting file is lost, station settings will need to be reconfigured.

- **To replace a station (For static IPv6 address)**

Use flowchart to replace a station.

**Important**

Save the settings after configuring the system.

Refer to "8.3. Setting File Management" > P.100.

If the setting file is lost, station settings will need to be reconfigured.

■ For stateless IPv6 address

● Create new data

Use flowchart to create new configuration, e.g., when installing a new system.

Support Tool is needed to configure the system using this flowchart. Install Support Tool, and set for IPv6. For set up information, refer to IX Support Tool Setting Manual.

1. Install a device (e.g., router) which can transmit RA (supports the stateless IPv6 setting).

Do not change the device so that it cannot transmit Router Advertisement (RA).
For more details, refer to the instruction manual of the device.



2. Connect PC to the station to be configured.

The default IP addresses of the stations are identical. Connect one at a time.
"3. Connecting to a PC" > [P.39](#)



3. With default IPv4 address (192.168.1.160), log in to the Web server of the station to be configured.

"4. Log in to the Web server of the station to be configured" > [P.40](#)



4. Set "IP addressing method" to "IPv6 Stateless."

"2.1. IP Address - ■IP addressing method" > [P.55](#)

The station is restarted and IPv6 address is automatically configured.

If the IP address fails to be automatically configured, it will become "FDC2::7000." If this happens, cycle power to the station, and then the IP address will be automatically reconfigured.



5. Configure other stations to be "IPv6 Stateless" in the same manner using Steps 2 through 4.



6. Search each station with Support Tool for its IPv6 address.




7. Log in to the Web server of each station with the IPv6 addresses identified.

"4. Log in to the Web server of the station to be configured" > [P.40](#)



8. Set "1.3. Language" > [P.52](#).

Click  to update the settings.



9. Configure the station.

"Configuring the station" > [P.49](#)

For Master Station configuration, refer to IX Master Station Web Setting Manual.



10.Done.

Important

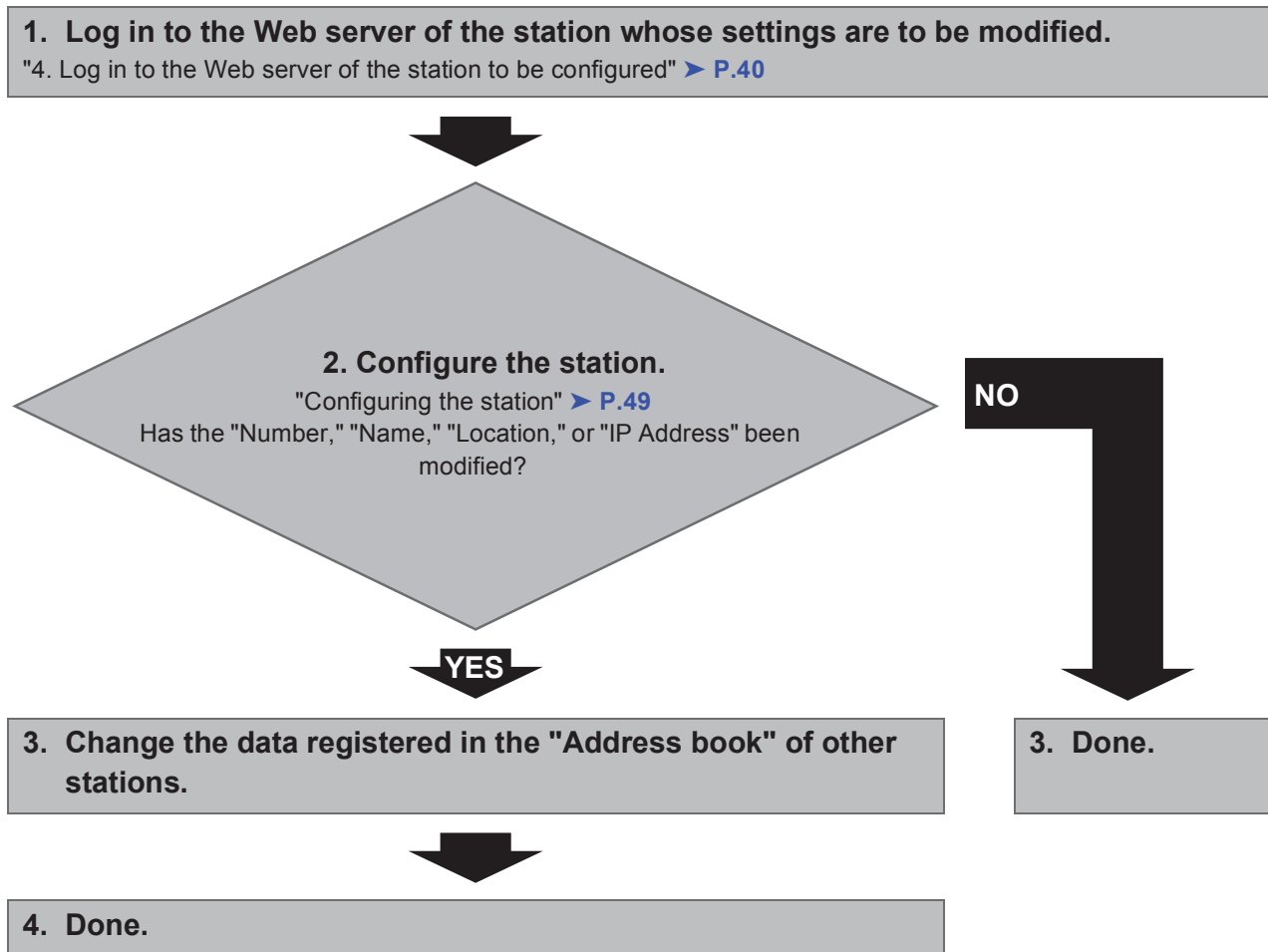
Save the settings after configuring the system.

Refer to "8.3. Setting File Management" > [P.100](#).

If the setting file is lost, station settings will need to be reconfigured.

- **To change the settings (For stateless IPv6 address)**

Use flowchart to change the settings.

**Important**

Save the settings after configuring the system.

Refer to "8.3. Setting File Management" > P.100.

If the setting file is lost, station settings will need to be reconfigured.

● **To add a station (For stateless IPv6 address)**

Use flowchart to add a station.

Support Tool is needed to configure the system using this flowchart. Install Support Tool, and set for IPv6. For set up information, refer to IX Support Tool Setting Manual.

1. Connect PC to the station to be added.

Connect one at a time. "3. Connecting to a PC" > [P.39](#)



2. With default IPv4 address (192.168.1.160), log in to the Web server of the station to be added.

"4. Log in to the Web server of the station to be configured" > [P.40](#)



3. Set "IP addressing method" to "IPv6 Stateless."

"2.1. IP Address - ■IP addressing method" > [P.55](#)

The station is restarted and IPv6 address is automatically configured.

If the IP address fails to be automatically configured, it will become "FDC2::7000." If this happens, cycle power to the station, and then the IP address will be automatically reconfigured.



4. Search each station to be added with Support Tool for its IPv6 address.




5. Log in to the Web server of the station with the IPv6 address that have been identified.

"4. Log in to the Web server of the station to be configured" > [P.40](#)



6. Set "1.3. Language" > [P.52](#).

Click  to update the settings.



7. Configure the station.

"Configuring the station" > [P.49](#)



8. Register the data of the added station to the "Address book" of the other stations.



9. Done.

Important

Save the settings after configuring the system.

Refer to "8.3. Setting File Management" > [P.100](#).

If the setting file is lost, station settings will need to be reconfigured.

- **To delete a station (For stateless IPv6 address)**

Use flowchart to delete a station.

1. Delete the station from the "Address book" of all other stations.

Caution

If a page is placed without deleting the station from the "Address book", the operation may be delayed.



2. Done.

Important

Save the settings after configuring the system.

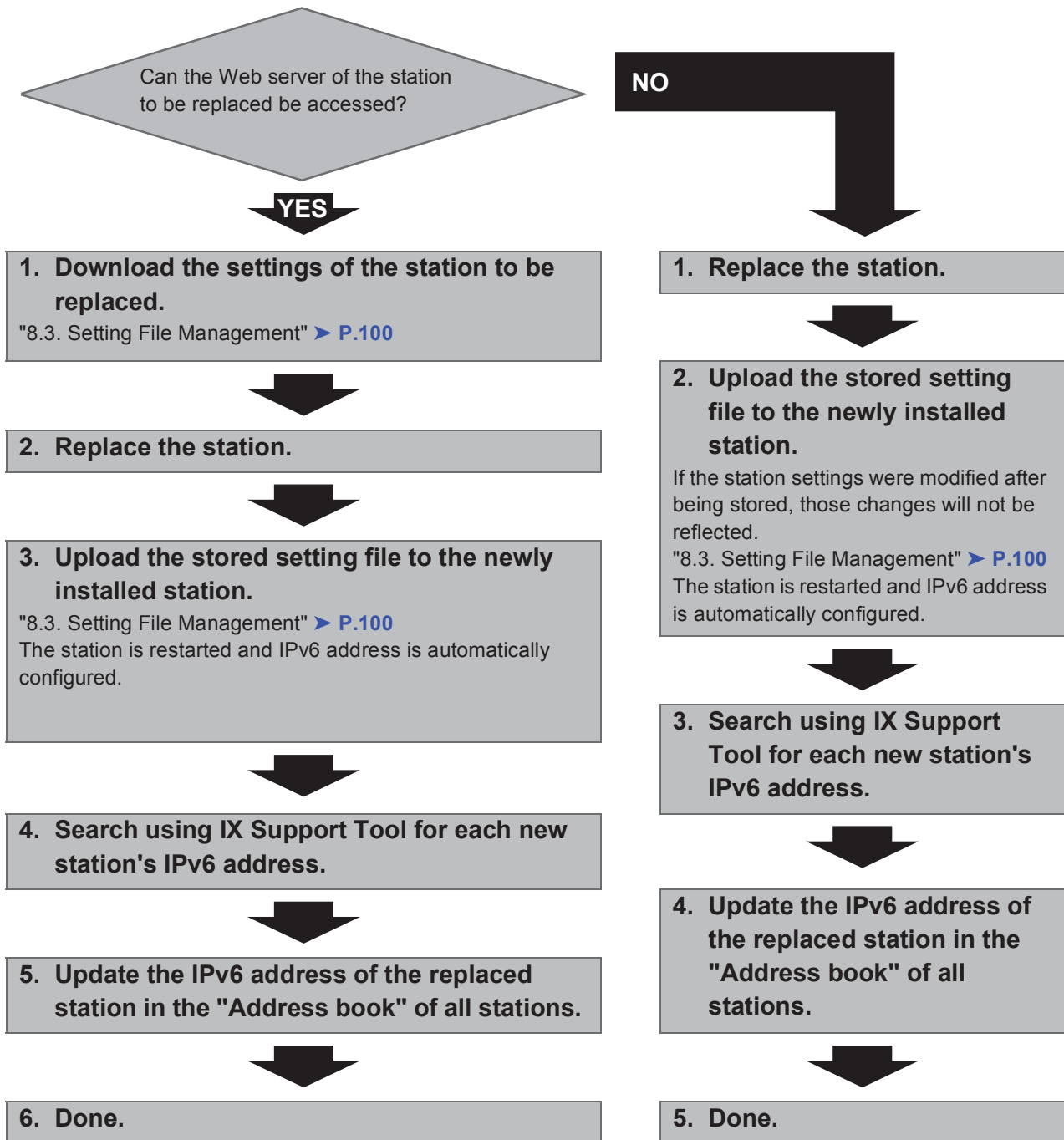
Refer to "8.3. Setting File Management" ➤ [P.100](#).

If the setting file is lost, station settings will need to be reconfigured.

● **To replace a station (For stateless IPv6 address)**

Use flowchart to replace a station.

Support Tool is needed to configure the system using this flowchart. Install Support Tool, and set for IPv6. For set up information, refer to IX Support Tool Setting Manual.



Important

Save the settings after configuring the system.

Refer to "8.3. Setting File Management" > P.100.

If the setting file is lost, station settings will need to be reconfigured.

■ For IPv6 address with DHCP

● Create new data

Use flowchart to create new configuration, e.g., when installing a new system.

1. Verify managed DHCP environment exists and that each station has been assigned a static IP address.

DUID of the station is "00030001 + MAC address."



2. Connect PC to the station to be configured.

The default IP addresses of the stations are identical. Connect one at a time.

"3. Connecting to a PC" ➤ [P.39](#)



3. With default IPv4 address (192.168.1.160), log in to the Web server of the station to be configured.

"4. Log in to the Web server of the station to be configured" ➤ [P.40](#)



4. Set "IP addressing method" to "IPv6 DHCPv6."

"■IP addressing method" ➤ [P.55](#)

The station is restarted and the IPv6 address assigned by DHCP server beforehand will be assigned.

If a DHCP address cannot be assigned, it will default to "FDC2::7000."



5. Configure other stations to be "IPv6 DHCPv6" in the same manner using Steps 2 through 4.




6. Log in to the Web server of the station with the assigned IPv6 address.

"4. Log in to the Web server of the station to be configured" ➤ [P.40](#)



7. Set "1.3. Language" ➤ [P.52](#).

Click  to update the settings.



8. Configure the station.

"Configuring the station" ➤ [P.49](#)

For Master Station configuration, refer to IX Master Station Web Setting Manual.



9. Done.

Important

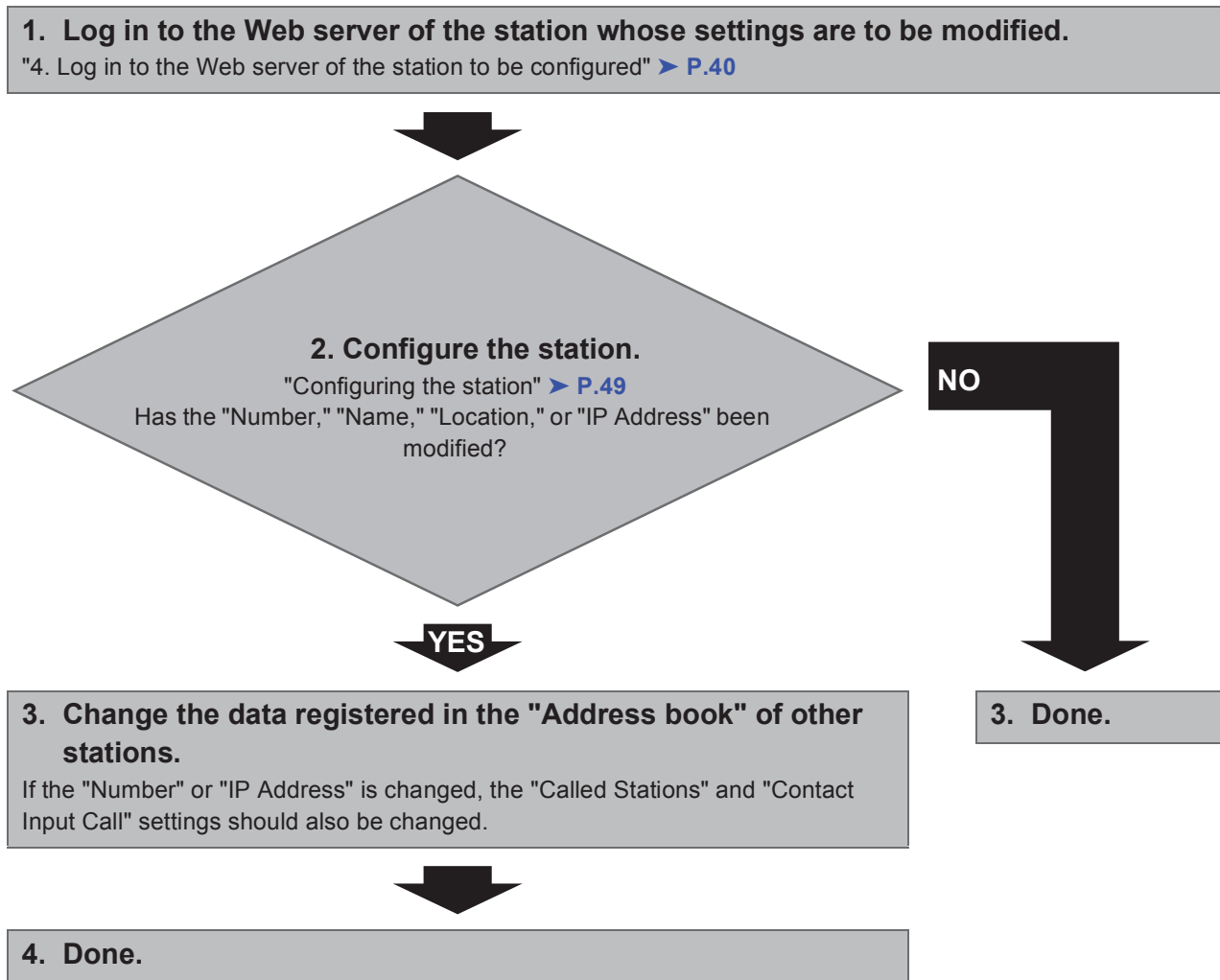
Save the settings after configuring the system.

Refer to "8.3. Setting File Management" ➤ [P.100](#).

If the setting file is lost, station settings will need to be reconfigured.

- **To change the settings (For IPv6 address with DHCP)**

Use flowchart to change the settings.

**Important**

Save the settings after configuring the system.

Refer to "8.3. Setting File Management" > P.100.

If the setting file is lost, station settings will need to be reconfigured.

● **To add a station (For IPv6 address with DHCP)**

Use flowchart to add a station.

1. Configure the DHCP server to assign a static IP address.

DUID of the station is "00030001 + MAC address."



2. Connect PC to the station to be added.

Connect one at a time. "Startup and Configuration - 3. Connecting to a PC" > [P.39](#)



3. With default IPv4 address (192.168.1.160), log in to the Web server of the station to be added.

"4. Log in to the Web server of the station to be configured" > [P.40](#)



4. Set "IP addressing method" to "IPv6 DHCPv6."

"■IP addressing method" > [P.55](#)

The station is restarted and the IPv6 address assigned by DHCP server beforehand will be assigned.

If a DHCP address cannot be assigned, it will default to "FDC2::7000."




5. Log in to the Web server of the station with the assigned IPv6 address.

"4. Log in to the Web server of the station to be configured" > [P.40](#)



6. Set "1.3. Language" > [P.52](#).

Click  to update the settings.



7. Configure the station.

"Configuring the station" > [P.49](#)



8. Register the data of the added station to the "Address book" of all the stations.



9. Done.

Important

Save the settings after configuring the system.

Refer to "8.3. Setting File Management" > [P.100](#).

If the setting file is lost, station settings will need to be reconfigured.

- **To delete a station (For IPv6 address with DHCP)**

Use flowchart to delete a station.

1. Delete the station from the "Address book" of all other stations.

Caution

If a page is placed without deleting the station from the "Address book", the operation may be delayed.



2. Done.

Important

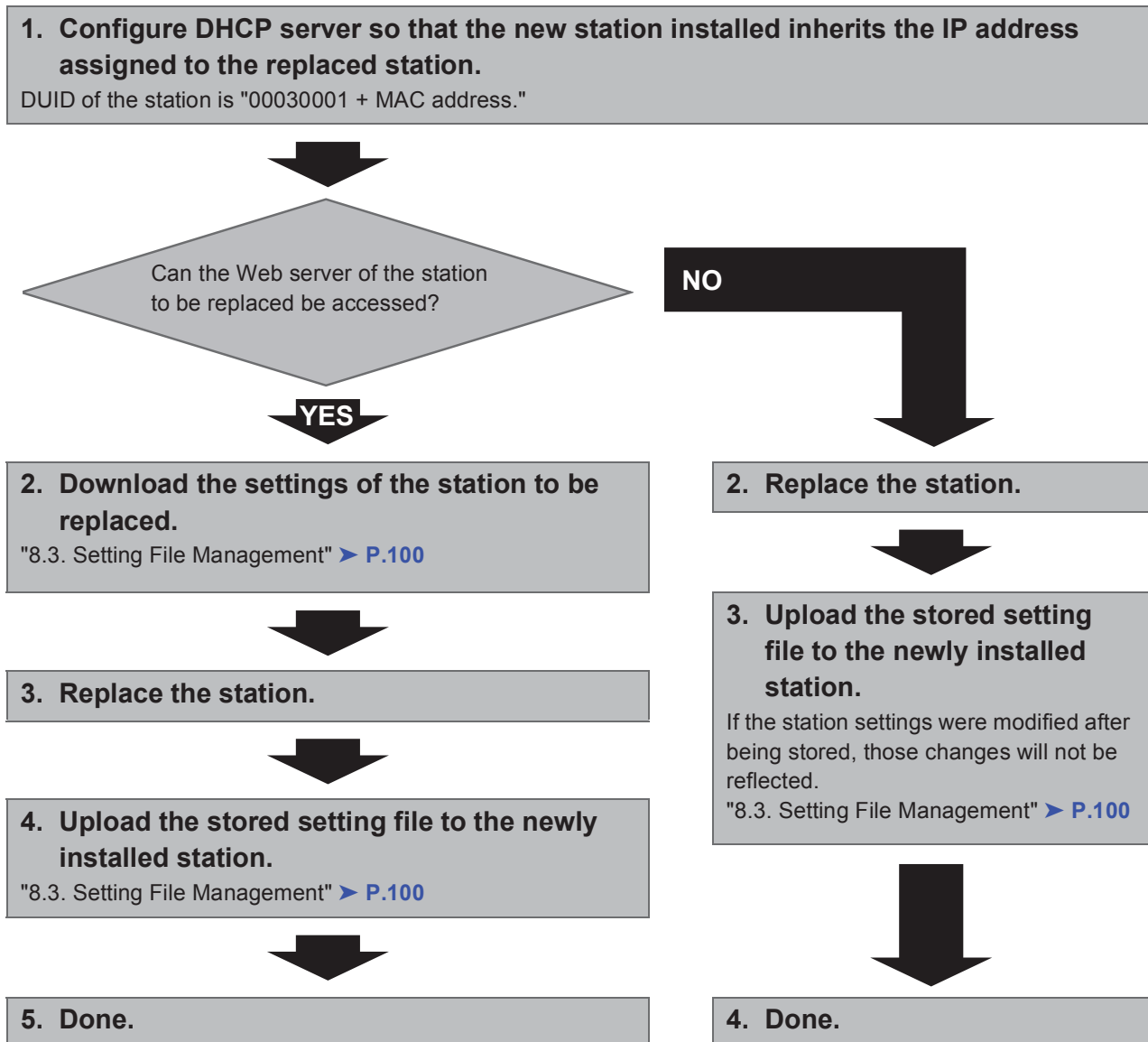
Save the settings after configuring the system.

Refer to "8.3. Setting File Management" ➤ [P.100](#).

If the setting file is lost, station settings will need to be reconfigured.

- **To replace a station (For IPv6 address with DHCP)**

Use flowchart to replace a station.

**Important**

Save the settings after configuring the system.

Refer to "8.3. Setting File Management" > P.100.

If the setting file is lost, station settings will need to be reconfigured.

Startup and Configuration

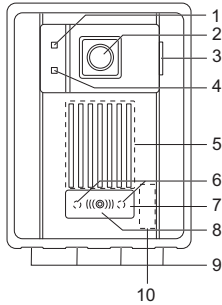
1. System requirements

Programming PC requirements.

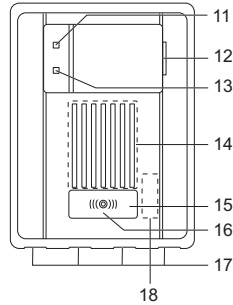
Network	Ethernet (10 BASE-T, 100 BASE-TX)
Web browser	Internet Explorer 7.0, 8.0, or 9.0 (SSL 3.0 or TLS 1.0 or later)

2. Part names

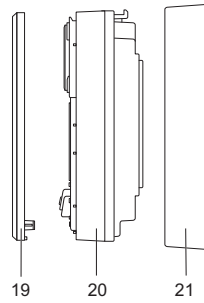
IX-DA
(Video Door Station)



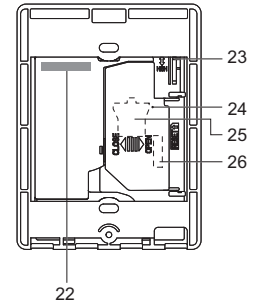
IX-BA
(Audio Only Door Station)



Side



Back



1	Call indicator (orange)	14	Speaker
2	Camera	15	Call button
3	Microphone	16	Status indicator (red)
4	Communication indicator (green)	17	Drain holes (4)
5	Speaker	18	MAC address (beneath the panel)
6	LED for night illumination	19	Panel
7	Call button	20	Main unit
8	Status indicator (red)	21	Mounting frame
9	Drain holes (4)	22	MAC address
10	MAC address (beneath the panel)	23	Camera angle adjustment lever (Video Door Station only)
11	Call indicator (orange)	24	Reset button*
12	Microphone	25	CAT5e/6 cable connector
13	Communication indicator (green)	26	Option connector

* Press and hold the reset button for longer than 1 second, then release to restart station.

■ Indicators

⬤: On; □: Off

Name	Status (pattern)	Description
Status indicator	Red flashing	Normal flashing → ⬤ 0.75 sec → □ 0.75 sec
		Fast flashing → ⬤ 0.25 sec → □ 0.25 sec
		Long interval flashing → ⬤ 0.25 sec → □ 4 sec
		Long irregular flashing → ⬤ 1 sec → □ 0.25 sec → ⬤ 0.25 sec → □ 0.25 sec → ⬤ 0.25 sec → □ 0.25 sec
		Short irregular flashing → ⬤ 1 sec → □ 0.25 sec → ⬤ 0.25 sec → □ 0.25 sec
	Red light	⬤
		Standby

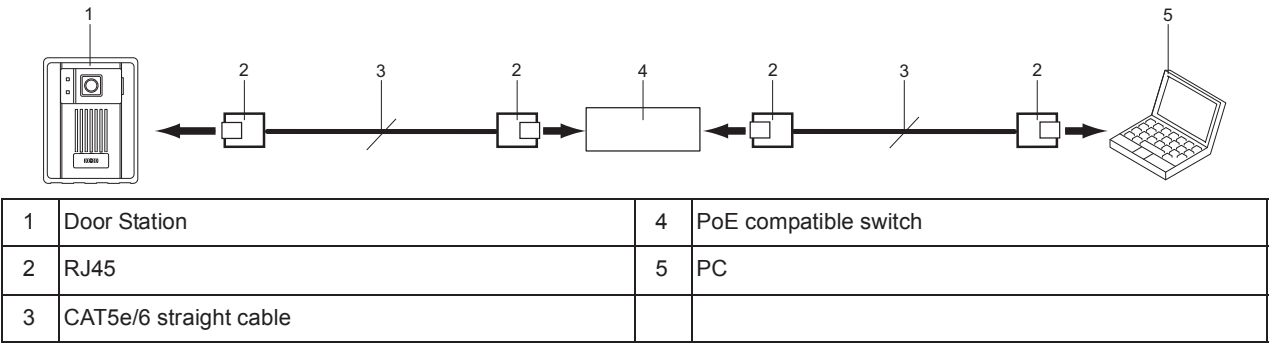
Point

For a status other than those noted here, refer to IX Door Station Operation Manual.

3. Connecting to a PC

Connect the station with a PC using PoE compatible switch.

- Use CAT5e/6 straight cable to connect the devices through LAN port.
- The station will be started with the default IP address of 192.168.1.160 and subnet mask of 255.255.255.0. Change the PC IP address as necessary.



4. Log in to the Web server of the station to be configured

- 1) Apply power to the station.
 - Power is supplied by a PoE compatible switch.
 - In some cases, it may take a few minutes for the station to start up.
 - The status indicator will light up red once the station has started.
- 2) Start the PC and open the browser (Internet Explorer).
- 3) Enter the address below in the address bar of the browser to show the language selection window.

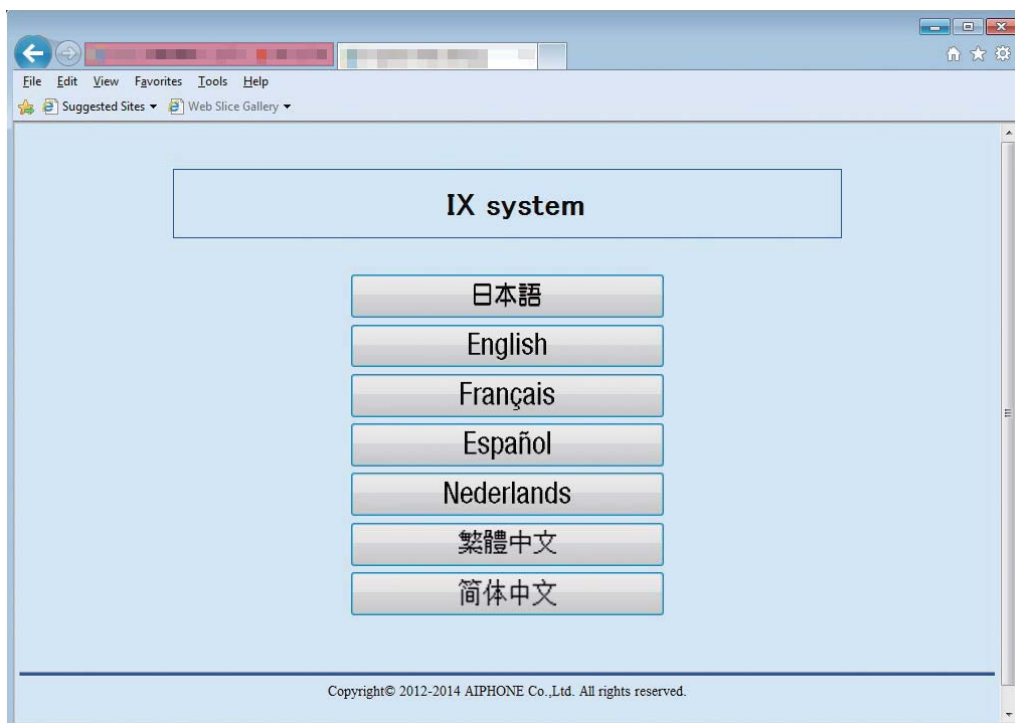
https://(IP address)/webset.cgi?login

- Enter the IP address of the station to be configured.
- When using IPv6, use brackets ([]) around the address.
- The default IP address is 192.168.1.160, and Subnet mask is 255.255.255.0.

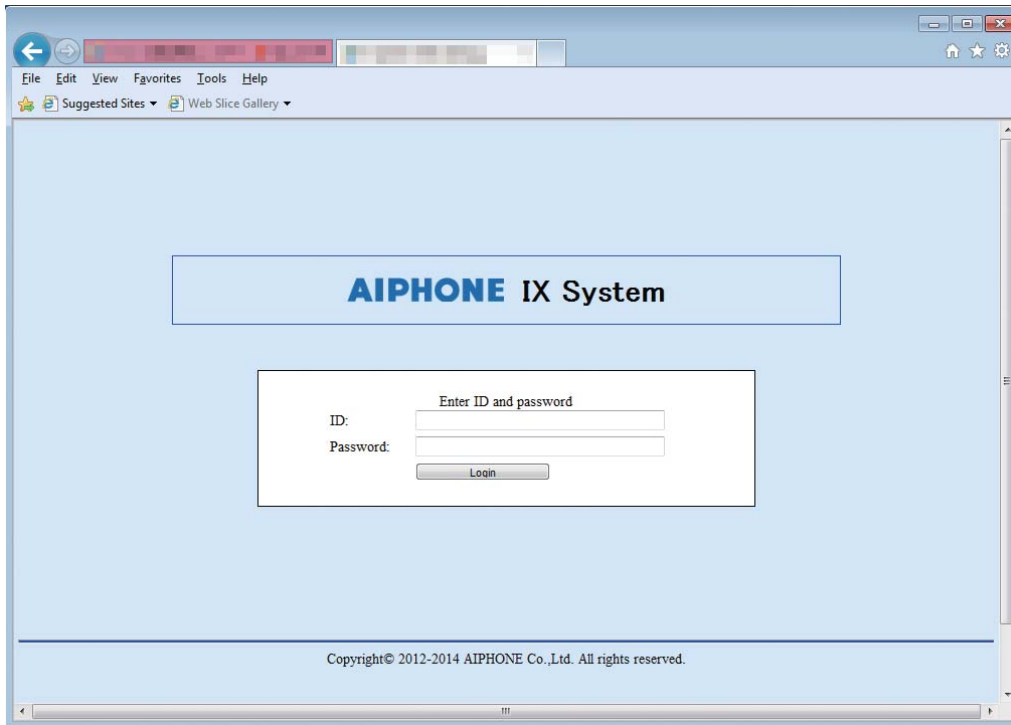
Point

If a station cannot be accessed, press and hold the reset button until the status indicator flashes red. The IP address, subnet mask, Administrator ID, Administrator Password, User ID, and User Password will return to default. Access the device within one minute of resetting.

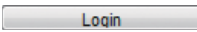
- 4) Select the language, login window of the selected language will be shown.
 - Language for displaying contents on the Web settings is changed.



5) Enter ID and Password to log in the Web browser.



Types of accounts	Default values
Administrator account	ID: admin Password: admin
General user account	ID: user Password: user

6) Click  to show the setting window.

Point

- Do not log in to multiple devices simultaneously on the same PC.
- When a security warning is received, press "Allow."

5. Setting window

When logging into the web server of the station, the following setting window will be seen. This window will be used to configure the station.

- Depending the PC and OS used, the window may be slightly different.
- After configuring the station, confirm its operation by referring to IX Door Station Operation Manual.
- The screen shot in this manual is from the setting window for Video Door Station.

■ Setting window sample

Setting window:

This indicates the setting window of the title selected.

Update button:

Click this button to update the station settings.

The screenshot shows a web browser window displaying the 'IX System Setting' page for a 'Video Door Station'. The browser's address bar shows 'http://192.168.1.101'. The page has a blue header with the title 'IX System Setting' and a sub-header 'Station Type: Video Door Station'. In the top right corner, there is an 'Update' button. On the left side, there is a sidebar menu with the following categories and links:

- Station Information**
 - Identification
 - ID and Password
 - Language
 - Time
- Network Settings**
 - IP Address
 - DNS
 - SIP
 - Multicast Address
 - Video
 - Audio
 - Packet Priority
 - NTP
- System Information**
 - Custom Sound Registry
- Contact / Audio Output Settings**
 - Contact Input
 - Output Specifications
- Call Settings**
 - Called Stations
 - Call Origination
- Function Settings**
 - Door Release Settings
 - Contact Input Call
 - Parline Settings
 - Parline Output Setting
 - E-mail Settings
 - OS Recognition

The main content area is titled 'Station Information' and contains three sections:

- Identification**
 - Number: (input field) 3-5 digits
 - Name: (input field) 1-24 alphanumeric characters
 - Location: (input field) 1-24 alphanumeric characters
- ID and Password**
 - Administrator ID: (input field) admin 1-32 alphanumeric characters
 - Administrator Password: (password field) 1-32 alphanumeric characters
 - User ID: (input field) user 1-32 alphanumeric characters
 - User Password: (password field) 1-32 alphanumeric characters
- Language**
 - If change 'Language', E-mail and System Log language will be changed. Web browser language is not changed.
 - Language: (dropdown menu) English

A red asterisk and the text 'Required Settings' are visible in the top right of the main content area.

Setting menu:

Shows all items that can be configured. Click the title to be configured and appropriate setting window will display.

5.1. How to configure

- 1) Click the title to configure.

The setting window for that particular title will be shown.

- 2) Configure each entry in this window.

- 3) When done making changes, click  to update the settings.

When the settings are updated, "Setting Updated." will be shown at the top left corner in the window. If the update fails, an error message will be shown.

If the settings do not need to be updated, click another title in the setting menu.


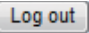

- 4) Repeat steps 1 through 3 for other titles.

* To log out of the Web server of the station, click  in the setting menu.

Important

Depending on the language for the display on the Master Station, the content of the settings item may appear incorrectly.

Point

- To end the setting session, do not use . Use  to end.
- The settings will not update if another title is selected without clicking .
- When no activity is detected for one hour, the connection will be automatically terminated.

6. System settings list

The table below shows all the settings for the system.

The symbols indicate the following:

- ♦: Indicates a required field. A value should be entered. Retain the default settings, unless a change is necessary.
- ♣: Indicates that Support Tool has uploaded the data. If the entry is altered through a browser, Support Tool will not recognize the change.

Point

- The following list shows the overview of the Web settings. The contents, how they are displayed, and the order of entries may vary from the actual screens.
- Download the settings data and store it at a safe location ➤ [P.100](#). Otherwise, it may become impossible to restore the settings after fixing a failure.
- The abbreviations for the access levels are:
A: administrator and U: users.
A check mark indicates that the entry can be modified with that level of privilege.

Setting Table					
Category	Subcategory	Entry	Access Level		Reference Page
			A	U	
Station Information					
Identification	-	Number ♠♣	✓		➤ P.50
		Name ♣	✓		➤ P.50
		Location ♣	✓		➤ P.50
ID and Password	-	Administrator ID ♠♣	✓		➤ P.51
		Administrator Password ♠♣	✓		➤ P.51
		User ID ♦	✓	✓	➤ P.51
		User Password ♦	✓	✓	➤ P.51
Language	-	Language	✓	✓	➤ P.52
Time	Time Zone	Select time zone	✓	✓	➤ P.53
	Daylight Savings Time	Enable automatic daylight savings time	✓	✓	➤ P.53
	NTP	Enable NTP	✓	✓	➤ P.53
	Date and Time	Time	✓	✓	➤ P.54

Setting Table					
Category	Subcategory	Entry	Access Level		Reference Page
			A	U	
Network Settings					
IP Address	-	IP addressing method	✓		➤ P.55
	IPv4 Address	IP Address ♦♣	✓		➤ P.57
		Subnet Mask ♦	✓		➤ P.57
		Default Gateway	✓		➤ P.57
	IPv6 Address	IP Address ♦♣	✓		➤ P.58
		Default Gateway	✓		➤ P.58
DNS	-	Primary Server	✓		➤ P.59
		Secondary Server	✓		➤ P.59
SIP	Connection	SIP Signaling Port ♦	✓		➤ P.60
	Miscellaneous	Call health check timer [sec] ♦	✓		➤ P.60
Multicast Address (Video Door Station only)	-	For Call	✓		➤ P.60
Video (Video Door Station only)	Video Encoder 1	Coding System	✓	✓	➤ P.61
		Resolution	✓	✓	➤ P.61
		Frame Rate [fps]	✓	✓	➤ P.62
		Select Profile [H.264 / AVC]	✓	✓	➤ P.62
		I-picture interval [H.264 / AVC] ♦	✓	✓	➤ P.62
		Bit rate [kbps] [H.264 / AVC]	✓	✓	➤ P.62
		Select Quality [Motion-JPEG]	✓	✓	➤ P.62
		RTP Start Port ♦	✓		➤ P.62
		RTP End Port ♦	✓		➤ P.62
	Video Encoder 2	Second Video Encoder	✓	✓	➤ P.63
		Coding System	✓	✓	➤ P.63
		Resolution	✓	✓	➤ P.63
		Frame Rate [fps]	✓	✓	➤ P.63
		Select Profile [H.264 / AVC]	✓	✓	➤ P.63
		I-picture interval [H.264 / AVC] ♦	✓	✓	➤ P.64
		Bit rate [kbps] [H.264 / AVC]	✓	✓	➤ P.64
		Select Quality [Motion-JPEG]	✓	✓	➤ P.64
		RTP Start Port ♦	✓		➤ P.64
		RTP End Port ♦	✓		➤ P.64

Setting Table					
Category	Subcategory	Entry	Access Level		Reference Page
			A	U	
Audio	-	Audio CODEC	✓		➤ P.65
		Audio RTP Transmission Interval [msec]	✓		➤ P.65
		RTP Idle Detection Time [sec] ♦	✓		➤ P.65
		Audio 1 RTP Start Port ♦	✓		➤ P.66
		Audio 1 RTP End Port ♦	✓		➤ P.66
		Audio 2 RTP Start Port ♦	✓		➤ P.66
		Audio 2 RTP End Port ♦	✓		➤ P.66
	Audio Buffer	Packets Buffered at Audio Start	✓		➤ P.66
		Maximum Packets Buffered	✓		➤ P.66
Packet Priority	-	TOS Value (Audio)	✓		➤ P.67
		TOS Value (Video) (Video Door Station only)	✓		➤ P.67
		TOS Value (SIP)	✓		➤ P.67
		VLAN Setting	✓		➤ P.67
		VLAN ID ♦	✓		➤ P.68
		VLAN Priority	✓		➤ P.68
NTP	Primary Server	Address	✓		➤ P.69
		Port	✓		➤ P.69
	Secondary Server	Address	✓		➤ P.70
		Port	✓		➤ P.70
	-	Synchronization Interval [hour] ♦	✓		➤ P.70
System Information					
Custom Sound Registry	-	-	✓	✓	➤ P.71
Contact / Audio Output Settings					
Contact Input	Contact Input Specifications	Type	✓		➤ P.73
		Detection time [msec] ♦	✓		➤ P.73
		Usage	✓		➤ P.73
Output Specifications	Relay Output Specifications	Output Time [msec / sec] ♦	✓		➤ P.74
		Usage	✓		➤ P.74
	Audio Output Specifications	Audio Output	✓		➤ P.75

Setting Table					
Category	Subcategory	Entry	Access Level		Reference Page
			A	U	
Call Settings					
Called Stations	Call Button Assignment ♣	-	✓		➤ P.76
	Priority Setting	Priority	✓	✓	➤ P.77
Call Origination	Call Acknowledged Settings	Ringback Tone	✓	✓	➤ P.78
		Call Timeout [sec] ♦	✓	✓	➤ P.78
		Ringback Tone Count [time(s)]	✓	✓	➤ P.78
	-	Busy Tone	✓	✓	➤ P.79
	-	Error Tone (Call failed)	✓	✓	➤ P.79
Function Settings					
Door Release Settings	Door Release Tone	Door Release Operating Tone	✓	✓	➤ P.80
	Door Release Authorization	Authentication Key	✓	✓	➤ P.81
	Door Release Output Settings (same as Contact / Audio Output Settings)	Output Time [msec / sec] ♦	✓		➤ P.81
		Usage	✓		➤ P.81
Contact Input Call	Door Station Call Groups ♣	Group list ♣	✓		➤ P.82
	Door Station Call Group Assignment	Group Number	✓	✓	➤ P.83
		Priority	✓	✓	➤ P.83
	Call Acknowledged Settings	Ringback Tone	✓	✓	➤ P.84
		Call Timeout [sec] ♦	✓	✓	➤ P.84
		Ringback Tone Count [time(s)]	✓	✓	➤ P.84
Paging Settings	Paging Pretone Setting	Pretone	✓	✓	➤ P.85
	Paging Output Setting	Paging Audio Output (same as Contact / Audio Output Settings)	✓		➤ P.85
Paging Output Setting	Paging Audio Output (same as Contact / Audio Output Settings)	Paging Audio Output (same as Contact / Audio Output Settings)	✓		➤ P.86
E-mail Settings	Server Settings	SMTP Server	✓		➤ P.87
		SMTP Port ♦	✓		➤ P.87
		SMTP Encryption	✓		➤ P.87
	Authentication Settings	SMTP Authentication	✓		➤ P.88
		Mode	✓		➤ P.88
		ID	✓		➤ P.88
		Password	✓		➤ P.88

Setting Table					
Category	Subcategory	Entry	Access Level		Reference Page
			A	U	
E-mail Settings	E-mail Addresses	Destination 1	✓	✓	➤ P.89
		Destination 2	✓	✓	➤ P.89
		Destination 3	✓	✓	➤ P.89
		Source Address	✓		➤ P.89
	E-mail Event Trigger	-	✓	✓	➤ P.90
	Additional Settings (Video Door Station only)	Attach Image	✓	✓	➤ P.93
		Attachment Image Filename	✓	✓	➤ P.93
CGI Integration	-	CGI Functionality	✓		➤ P.93
SIF Integration	-	SIF Functionality	✓		➤ P.94
	SIF Communication Settings (sif.ini)	-	✓		➤ P.94
	SIF Parameter Settings (sif_conf.ini)	-	✓		➤ P.94
Station Hardware Settings					
Volume Settings	Volume Settings	Transmit Volume	✓	✓	➤ P.95
		Receive Volume	✓	✓	➤ P.95
		Ringtone Volume	✓	✓	➤ P.95
Communication Settings	-	Talk Timeout [sec] ◆	✓	✓	➤ P.95
Camera Settings (Video Door Station only)	Environmental Settings	Backlight Compensation Adjustment	✓	✓	➤ P.96
		Low Light Sensitivity Adjustment	✓	✓	➤ P.96
	Color Settings	Brightness ◆	✓	✓	➤ P.97
		Contrast ◆	✓	✓	➤ P.97
		Color ◆	✓	✓	➤ P.97
	LED Illumination Control	During Call / Communication	✓	✓	➤ P.97
		While Monitored	✓	✓	➤ P.97
Maintenance					
Firmware Update	-	-	✓		➤ P.98
Initialization	-	-	✓		➤ P.99
Setting File Management	-	-	✓		➤ P.100
System Log	-	-	✓		➤ P.102

Configuring the station

Important

The symbols indicate the following:

- ◆: Indicates a required field. A value should be entered. Retain the default settings, unless a change is necessary.
- ♣: Indicates that Support Tool has uploaded the data. If the entry is altered through a browser, Support Tool will not recognize the change.

1. Station Information

1.1. Identification

Identification

Number: 3-5 digits
 Name: 1-24 alphanumeric characters
 Location: 1-24 alphanumeric characters

■ Number ♦♣

Description	Enter the station number. Give each station a unique number. The station number set up will be shown to the recipient when a call is originated.
Settings	3-5 digits
Default values	-

■ Name ♣

Description	Enter the station name. The station name set up will be shown to the recipient when a call is originated.
Settings	1-24 alphanumeric characters
Default values	-

■ Location ♣

Description	Enter the location where the station is installed. The installed location set up will be shown to the recipient when a call is originated.
Settings	1-24 alphanumeric characters
Default values	-

1.2. ID and Password

•ID and Password

Administrator ID: 1-32 alphanumeric characters

Administrator Password: 1-32 alphanumeric characters

User ID: 1-32 alphanumeric characters

User Password: 1-32 alphanumeric characters

■ Administrator ID ♦♣

Description	Set the ID of the administrator account for accessing via a Web browser to configure a station.
Settings	1-32 alphanumeric characters
Default values	admin

■ Administrator Password ♦♣

Description	Set the password of the administrator account for accessing via a Web browser to configure a station.
Settings	1-32 alphanumeric characters
Default values	admin

■ User ID ♦

Description	Set the ID of a user account for accessing via a Web browser to configure a station.
Settings	1-32 alphanumeric characters
Default values	user

■ User Password ♦

Description	Set the password of a user account for accessing via a Web browser to configure a station.
Settings	1-32 alphanumeric characters
Default values	user

Point

- "■Administrator ID" and "■User ID" cannot be identical.
- "■Administrator Password" and "■User Password" are displayed as "••••" on the screen.

1.3. Language

•Language

If change 'Language', E-mail and System Log language will be changed. Web browser language is not changed.

Language:

■ Language

Description	Set the e-mail and System Log language.
Settings	<ul style="list-style-type: none"> • Japanese • English • French • Spanish • Dutch • Traditional Chinese • Simplified Chinese
Default values	English

1.4. Time

1.4.1. Time Zone

■ Select time zone

Description	Select the time zone to be used.
Settings	Select from 99 regions
Default values	(GMT-08:00) Pacific Standard Time (U.S.), Tijuana

1.4.2. Daylight Savings Time

■ Enable automatic daylight savings time

Description	Adjust the daylight saving time automatically to fit the region selected in "■Select time zone."
Settings	<ul style="list-style-type: none"> • Yes • No
Default values	No

1.4.3. NTP

■ Enable NTP

Description	Enable NTP server time retrieval. If selecting "Yes," configure "2.8. NTP" ➤ P.69 .
Settings	<ul style="list-style-type: none"> • Yes • No
Default values	No

1.4.4. Date and Time

■ Time

Description	Set the current time for the system. This is a required setting.
Settings	2012/1/1/00:00:00-2037/12/31/23:59:59 <input type="button" value="Sync with PC"/> : Synchronized with the current time setting of the PC.
Default values	2013/1/1/00:00:00
Remarks	The clock cannot be updated by pressing <input type="button" value="Update"/> . Press <input type="button" value="Apply Time to Station"/> to update the clock.

2. Network Settings

2.1. IP Address

Caution

When a setting related to the IP address is updated, the station will restart. In some cases, it may take around 10 minutes for the station to start up.

IP Address

Changing IP Address settings will cause station to restart after Update is clicked. This will take a few minutes.

IP addressing method: ☒ IPv4 Static ☐ IPv6 Static

IPv4 Address

IP Address: - - - 1.0.0.0-223.255.255.255

Subnet Mask: - - - 128.0.0.0-255.255.255.255

Default Gateway: - - - 1.0.0.0-223.255.255.255

IPv6 Address

IP Address: 2000::0-3FFF:FFFF:FFFF:FFFF:FFFF:FFFF:FFFF:FFFF or FD00::0-FDFF:FFFF:FFFF:FFFF:FFFF:FFFF:FFFF:FFFF

Default Gateway: ::FF:0-FFFF:FFFF:FFFF:FFFF:FFFF:FFFF:FFFF

■ IP addressing method

Description	Select the addressing method for the IP address selected.
Settings	When selecting IPv4: <ul style="list-style-type: none"> • Static • DHCP When selecting IPv6: <ul style="list-style-type: none"> • Static • Stateless • DHCPv6
Default values	IPv4 Static

Caution

- IPv4 and IPv6 cannot be mixed in the same system.
- When selecting "DHCP" for IPv4, configure the system so that the DHCP server assigns a static IP address to each station.
- When selecting "Stateless" for IPv6, do not change the prefix of the device so that it can transmit RA.
- When selecting "DHCPv6" for IPv6, configure the system so that the DHCP server assigns a static IP address to each station. DUID of the station is "00030001 + MAC address."
- When setting up a product from another manufacturer, such as a DHCP server, refer to its manual.

2.1.1. IPv4 Address

Caution

When "■IP addressing method" is "DHCP," entering an "■IP Address," "■Subnet Mask," and "■Default Gateway" and the station is updated, these changes will not be applied.

■ IP Address ♦♣

Description	Set the IP address. Do not use duplicate IP addresses.
Settings	1.0.0.0-223.255.255.255
Default values	-

■ Subnet Mask ♦

Description	Set the subnet mask.
Settings	128.0.0.0-255.255.255.255
Default values	-

■ Default Gateway

Description	Set the default gateway of the network to which the station belongs.
Settings	1.0.0.0-223.255.255.255
Default values	-

2.1.2. IPv6 Address

Caution

When "■IP addressing method" is "Stateless" and "DHCPv6," entering an "■IP Address" and "■Default Gateway" and the station is updated, these changes will not be applied.

■ IP Address ♦♣

Description	Set the IP address. Do not use duplicate IP addresses.
Settings	2000::0-3FFF:FFFF:FFFF:FFFF:FFFF:FFFF:FFFF:FFFF or FD00::0-FDFF:FFFF:FFFF:FFFF:FFFF:FFFF:FFFF:FFFF
Default values	-

■ Default Gateway

Description	Set the default gateway of the network to which the station belongs.
Settings	::FF:0-FEFF:FFFF:FFFF:FFFF:FFFF:FFFF:FFFF
Default values	-

2.3. SIP

•SIP

Connection

SIP Signaling Port: 1-65535

Miscellaneous

Call health check timer [sec]: 90 sec

2.3.1. Connection

■ SIP Signaling Port ◆

Description	Set the port for SIP communication. Set the same port number for the stations which communicate with each other.
Settings	1-65535
Default values	5060

2.3.2. Miscellaneous

■ Call health check timer [sec] ◆

Description	When a communication error occurs during a call or while monitoring, the connection is disconnected after the specified time elapses.
Settings	<ul style="list-style-type: none"> Do not transmit re-INVITE: A communication error should not be detected. 80-3600 sec
Default values	80-3600 sec, 90 sec

2.4. Multicast Address (Video Door Station only)

Set when configured to use Multicast in "5.1. Called Stations" ► [P.76](#).

•Multicast Address

For Call: [IPv4] [IPv6]

■ For Call

Description	Set the multicast address for transmitting a call through multicast. Each station must have a unique multicast address.
Settings	[IPv4]: 224.0.0.0-239.255.255.255 [IPv6]: FF10::0-FF1F:FFFF:FFFF:FFFF:FFFF:FFFF:FFFF:FFFF
Default values	-

2.5. Video (Video Door Station only)

•Video

Items marked [H.264 / AVC] or [Motion-JPEG] apply only to their respective Coding System.
 The 'Video Encoder 1' RTP End Port should be greater than 90 digits from the RTP Start Port.
 The 'Video Encoder 2' RTP End Port should be greater than 10 digits from the RTP Start Port.

Video Encoder 1

Coding System: H.264 / AVC

Resolution: 320x240 (QVGA)

Frame Rate [fps]: 15

Select Profile [H.264 / AVC]: Main

I-picture interval [H.264 / AVC]: 15 1-100

Bit rate [kbps] [H.264 / AVC]: 1024

Select Quality [Motion-JPEG]: 6

RTP Start Port: 30000 1-65534

RTP End Port: 31000 1-65535

Video Encoder 2

Second Video Encoder: ☒ Enable ☐ Disable

Coding System: H.264 / AVC

Resolution: 320x240 (QVGA)

Frame Rate [fps]: 15

Select Profile [H.264 / AVC]: Main

I-picture interval [H.264 / AVC]: 15 1-100

Bit rate [kbps] [H.264 / AVC]: 1024

Select Quality [Motion-JPEG]: 6

RTP Start Port: 32000 1-65534

RTP End Port: 33000 1-65535

2.5.1. Video Encoder 1

Configure the video settings for a call between IX system stations.

■ Coding System

Description	Select the coding system for the video.
Settings	<ul style="list-style-type: none"> • H.264 / AVC • Motion-JPEG
Default values	H.264 / AVC

■ Resolution

Description	Select the resolution for the video.
Settings	<ul style="list-style-type: none"> • 320x240 (QVGA) • 640x480 (VGA)
Default values	320x240 (QVGA)

■ Frame Rate [fps]

Description	Select the frame rate.
Settings	1, 3, 5, 7.5, 10, 15, 20, 30 fps
Default values	15 fps

■ Select Profile [H.264 / AVC]

Description	Select the profile for H.264/AVC.
Settings	<ul style="list-style-type: none"> • Baseline • Main • High
Default values	Main

■ I-picture interval [H.264 / AVC] ♦

Description	Set the interval for transmitting pictures with H.264/AVC.
Settings	1-100
Default values	15

■ Bit rate [kbps] [H.264 / AVC]

Description	Select the bit rate for H.264/AVC.
Settings	64, 128, 256, 384, 512, 768, 1024, 2048 kbps
Default values	1024 kbps

■ Select Quality [Motion-JPEG]

Description	Set the image quality of Motion-JPEG.
Settings	1 (Low) through 10 (High)
Default values	6

■ RTP Start Port ♦

Description	Set the start port for the RTP communication range. The (RTP End Port) should be greater than 90 digits from the (RTP Start Port). If a smaller range is set, in some cases ports outside the range will still be used.
Settings	1-65534
Default values	30000

■ RTP End Port ♦

Description	Set the end port for the RTP communication range. The (RTP End Port) should be greater than 90 digits from the (RTP Start Port). If a smaller range is set, in some cases ports outside the range will still be used.
Settings	1-65535
Default values	31000

2.5.2. Video Encoder 2

Set when transmitting video through ONVIF.

When viewing video of Video Door Station with other manufacturer's product, refer to "9. Viewing video from Door Station with 3rd party products (ONVIF)" ➤ [P.103](#).

Caution

These settings may be changed by ONVIF-compliant 3rd party products, if utilized. Refer to the manual of the 3rd party product to be used.

■ Second Video Encoder

Description	Enable / Disable the dual stream function. Set to "Enable" when transmitting video through ONVIF.
Settings	<ul style="list-style-type: none"> • Enable • Disable
Default values	Enable

■ Coding System

Description	Select the coding system for the video.
Settings	<ul style="list-style-type: none"> • H.264 / AVC • Motion-JPEG
Default values	H.264 / AVC

■ Resolution

Description	Select the resolution for the video.
Settings	<ul style="list-style-type: none"> • 320x240 (QVGA) • 640x480 (VGA)
Default values	320x240 (QVGA)

■ Frame Rate [fps]

Description	Select the frame rate.
Settings	1, 3, 5, 7.5, 10, 15, 20, 30 fps
Default values	15 fps

■ Select Profile [H.264 / AVC]

Description	Select the profile for H.264/AVC.
Settings	<ul style="list-style-type: none"> • Baseline • Main • High
Default values	Main

■ I-picture interval [H.264 / AVC] ♦

Description	Set the interval for transmitting pictures with H.264/AVC.
Settings	1-100
Default values	15

■ Bit rate [kbps] [H.264 / AVC]

Description	Select the bit rate for H.264/AVC.
Settings	64, 128, 256, 384, 512, 768, 1024, 2048 kbps
Default values	1024 kbps

■ Select Quality [Motion-JPEG]

Description	Set the image quality of Motion-JPEG.
Settings	1 (Low) through 10 (High)
Default values	6

■ RTP Start Port ♦

Description	Set the start port for the RTP communication range. The (RTP End Port) should be greater than 10 digits from the (RTP Start Port). If a smaller range is set, in some cases ports outside the range will still be used.
Settings	1-65534
Default values	32000

■ RTP End Port ♦

Description	Set the end port for the RTP communication range. The (RTP End Port) should be greater than 10 digits from the (RTP Start Port). If a smaller range is set, in some cases ports outside the range will still be used.
Settings	1-65535
Default values	33000

2.6. Audio

●Audio

The Audio 1 RTP End Port should be greater than 210 digits from the RTP Start Port.
The Audio 2 RTP End Port should be greater than 10 digits from the RTP Start Port.

Audio CODEC: ☒ G.711(μ-law) ☐ G.711(A-law)
 Audio RTP Transmission Interval [msec]: 20 This setting is ignored when transmitting to multiple stations (paging, etc.)
 RTP Idle Detection Time [sec]: 10 10-180sec
 Audio 1 RTP Start Port: 20000 1-65534
 Audio 1 RTP End Port: 21000 1-65535
 Audio 2 RTP Start Port: 22000 1-65534
 Audio 2 RTP End Port: 23000 1-65535

Audio Buffer

Packets Buffered at Audio Start: 1
 Maximum Packets Buffered: 3 Maximum Packet Buffer must be larger than Audio Start Buffer.

■ Audio CODEC

Description	Select the audio CODEC.
Settings	<ul style="list-style-type: none"> • G.711 (μ-law) • G.711 (A-law)
Default values	G.711 (μ-law)

Caution

Stations with different audio CODEC cannot call, monitor, or page each other.

■ Audio RTP Transmission Interval [msec]

Description	Select the transmission interval of RTP audio.
Settings	20, 40, 60, 80, 100 msec
Default values	20 msec

■ RTP Idle Detection Time [sec] ♦

Description	Set the detection time of the idle state of RTP audio. If RTP audio is not received within the specified time during a call or while monitoring or paging, it will be disconnected.
Settings	10-180 sec (by 1 sec)
Default values	10 sec

■ Audio 1 RTP Start Port ◆

Description	Set the start port for the Audio 1 RTP communication range. The (RTP End Port) should be greater than 210 digits from the (RTP Start Port). If a smaller range is set, in some cases ports outside the range will still be used.
Settings	1-65534
Default values	20000

■ Audio 1 RTP End Port ◆

Description	Set the end port for the Audio 1 RTP communication range. The (RTP End Port) should be greater than 210 digits from the (RTP Start Port). If a smaller range is set, in some cases ports outside the range will still be used.
Settings	1-65535
Default values	21000

■ Audio 2 RTP Start Port ◆

Description	Set the start port for the Audio 2 RTP communication range. The (RTP End Port) should be greater than 10 digits from the (RTP Start Port). If a smaller range is set, in some cases ports outside the range will still be used.
Settings	1-65534
Default values	22000

■ Audio 2 RTP End Port ◆

Description	Set the end port for the Audio 2 RTP communication range. The (RTP End Port) should be greater than 10 digits from the (RTP Start Port). If a smaller range is set, in some cases ports outside the range will still be used.
Settings	1-65535
Default values	23000

2.6.1. Audio Buffer

■ Packets Buffered at Audio Start

Description	Set the number of packets buffered until audio is started.
Settings	0-4
Default values	1

■ Maximum Packets Buffered

Description	Set the maximum number of packets to be buffered. When the system receives more packets, oldest packets are discarded. Choose a value greater than "■Packets Buffered at Audio Start."
Settings	2-10
Default values	3

2.7. Packet Priority

Caution

When a setting related to VLAN is updated, the station will restart. In some cases, it may take around 10 minutes for the station to start up.

•Packet Priority

TOS Value (Audio): 0x00 0x00-0xFF

TOS Value (Video): 0x00 0x00-0xFF

TOS Value (SIP): 0x00 0x00-0xFF

Changing VLAN settings will cause station to restart after Update is clicked. This will take a few minutes.

VLAN Setting: Disable

VLAN ID: 1 1-4094

VLAN Priority: 0

■ TOS Value (Audio)

Description	Set the audio packet priority (TOS value).
Settings	0x00-0xFF
Default values	0x00

■ TOS Value (Video) (Video Door Station only)

Description	Set the video packet priority (TOS value).
Settings	0x00-0xFF
Default values	0x00

■ TOS Value (SIP)

Description	Set the packet priority (TOS value) for SIP.
Settings	0x00-0xFF
Default values	0x00

■ VLAN Setting

Description	Enable/disable VLAN tagging.
Settings	<ul style="list-style-type: none"> • Disable • Enable
Default values	Disable

Important

When "■VLAN Setting" is enabled, ensure that the switches, PCs, and stations are all configured for VLAN operation.

■ VLAN ID ♦

Description	Enter the VLAN ID.
Settings	1-4094
Default values	1

■ VLAN Priority

Description	Set the VLAN priority.
Settings	0 (Low) through 7 (High)
Default values	0

2.8. NTP

When using NTP, it must first be enabled. "■Enable NTP" ➤ [P.53](#)

•NTP
'Enable NTP' in [Station Information] must be set to 'Yes'.

Primary Server

Address:

[IPv4]

1.0.0.0-223.255.255.255 or Hostname (1-64 alphanumeric characters)

[IPv6]

::FF:0-FEFF:FFFF:FFFF:FFFF:FFFF:FFFF:FFFF or Hostname (1-64 alphanumeric characters)

Port:

123

1-65535

Secondary Server

Address:

[IPv4]

1.0.0.0-223.255.255.255 or Hostname (1-64 alphanumeric characters)

[IPv6]

::FF:0-FEFF:FFFF:FFFF:FFFF:FFFF:FFFF:FFFF or Hostname (1-64 alphanumeric characters)

Port:

123

1-65535

Synchronization Interval [hour]:

24

Sync every [1-255] hours

2.8.1. Primary Server

■ Address

Description	Set the IP address of the primary NTP server. When using a "Hostname," set up "2.2. DNS" ➤ P.59 .
Settings	[IPv4]: 1.0.0.0-223.255.255.255 or Hostname (1-64 alphanumeric characters) [IPv6]: ::FF:0-FEFF:FFFF:FFFF:FFFF:FFFF:FFFF:FFFF or Hostname (1-64 alphanumeric characters)
Default values	-

■ Port

Description	Set the communication port for the NTP server.
Settings	1-65535
Default values	123

2.8.2. Secondary Server

■ Address

Description	Set the IP address of the primary NTP server. When using a "Hostname," set up "2.2. DNS" ➤ P.59 .
Settings	[IPv4]: 1.0.0.0-223.255.255.255 or Hostname (1-64 alphanumeric characters) [IPv6]: ::FF:0-FE:FF:FFFF:FFFF:FFFF:FFFF:FFFF:FFFF or Hostname (1-64 alphanumeric characters)
Default values	-

■ Port

Description	Set the communication port for the NTP server.
Settings	1-65535
Default values	123

■ Synchronization Interval [hour] ♦

Description	Set the interval for synchronizing the clock with NTP server.
Settings	1-255 hours (by one hour)
Default values	24 hours

3. System Information

3.1. Custom Sound Registry

Register a maximum of 100 audio files to be used for tone messages (total length of approximately 200 seconds / approximately 3.2 MB).

•Custom Sound Registry

#	Sound Name	Browse for .wav file <small>(Less than 200 sec, cumulative)</small>	Delete
1		1) <input type="button" value="Browse..."/>	<input type="checkbox"/>
2		<input type="button" value="Browse..."/>	<input type="checkbox"/>
3		<input type="button" value="Browse..."/>	<input type="checkbox"/>
4		<input type="button" value="Browse..."/>	<input type="checkbox"/>
5		<input type="button" value="Browse..."/>	<input type="checkbox"/>
6		<input type="button" value="Browse..."/>	<input type="checkbox"/>
7		<input type="button" value="Browse..."/>	<input type="checkbox"/>
8		<input type="button" value="Browse..."/>	<input type="checkbox"/>
9		<input type="button" value="Browse..."/>	<input type="checkbox"/>
10		<input type="button" value="Browse..."/>	<input type="checkbox"/>
11		<input type="button" value="Browse..."/>	<input type="checkbox"/>
12		<input type="button" value="Browse..."/>	<input type="checkbox"/>
13		<input type="button" value="Browse..."/>	<input type="checkbox"/>
14		<input type="button" value="Browse..."/>	<input type="checkbox"/>
15		<input type="button" value="Browse..."/>	<input type="checkbox"/>


■ Custom Sound Registry

Description	Register the audio files to be used for tone messages. Up to 100 files can be registered.
Settings	<ul style="list-style-type: none"> • Sound Name: File name of the registered file. • Browse for .wav file: Total of 100 files, and total length of approximately 200 seconds Supported file format <ul style="list-style-type: none"> - File format: .wav - Audio sample size: 16 bits - Audio sample rate: 8 kHz - Number of channels: One (monaural)
Default values	-

How to register an audio file

- 1) Click at the end of the row for the station for which to register the file.
- 2) Select the audio file, and click .
- 3) When done, click .

Point

- To delete a registered audio file, select the file in the delete column and click .
- When using the file for a tone message, set up the silent time for the source.
- A DVD-ROM with sample files is included in the package of the Master Station.

4. Contact / Audio Output Settings

4.1. Contact Input

•Contact Input

Contact Input Specifications

Input Number	Type	Input Specifications		Usage
		Detection time [msec] ♦		
1	Make ▼	200	msec	▼

4.1.1. Contact Input Specifications

■ Type

Description	Set the type of contact input.
Settings	<ul style="list-style-type: none"> • Make (N/O) • Break (N/C)
Default values	Make

■ Detection time [msec] ♦

Description	Set the detection confirmation time of contact input.
Settings	200-2000 msec (by 100 msec)
Default values	200 msec

■ Usage

Description	Set the usage of contact input.
Settings	<ul style="list-style-type: none"> • Blank: Not used • Call: Contact input originates a call.
Default values	Blank
Remarks	When set to "Call," be sure to configure "6.2. Contact Input Call" ► P.82 .

4.2. Output Specifications

• **Output Specifications**

Relay Output Specifications

When usage is set for 'Paging Control', 'Output time [msec/sec]' will be ignored.
 When usage is set for 'Contact Input Call / Communication State', 'Output time [msec/sec]' will be ignored.

Output Number	Output Specifications Output Time [msec / sec] ♦	Usage
1	200-2000 msec / 200msec step, 3-300sec / 1sec step 200-2000 msec 400 msec	

Audio Output Specifications

Audio Output:

- ☒ Built-in Speaker for communication and paging
- ☐ Audio Output for communication and paging
- ☐ Built-in Speaker for communication, Audio Output for paging

4.2.1. Relay Output Specifications

■ Output Time [msec / sec] ♦

Description	Set the output time of relay output. The entry is identical to "■Output Time [msec / sec] ♦" > P.81. When the setting is changed, "■Output Time [msec / sec] ♦" > P.81 will be changed as well.
Settings	<ul style="list-style-type: none"> • 0 (Momentary): Delivers output while IX-MV presses "Release" button. • 200-2000 msec (by 200 msec) • 3-300 sec (by 1 sec)
Default values	200-2000 msec, 400 msec

■ Usage

Description	Set the usage of relay output. The entry is identical to "■Usage" > P.81. When the setting is changed, "■Usage" > P.81 will be changed as well.
Settings	<ul style="list-style-type: none"> • Blank: Not used • Door Release: Delivers output to release the door. • Paging Control: Delivers output while paging the speaker of the main unit. Irrespective of "■Output Time" setting, the output is delivered to the contact while audio is activated. • Contact Input Call / Communication State: Delivers output during a call or communication triggered by the contact input.
Default values	Blank

4.2.2. Audio Output Specifications

■ Audio Output

Description	Set how audio is to be delivered. The entry is identical to "■Paging Audio Output (same as Contact / Audio Output Settings)" ➤ P.85 . When the setting is changed, "■Paging Audio Output (same as Contact / Audio Output Settings)" ➤ P.85 will be changed as well.
Settings	<ul style="list-style-type: none">• Built-in Speaker for communication and paging• Audio Output for communication and paging• Built-in Speaker for communication, Audio Output for paging
Default values	Built-in Speaker for communication and paging

5. Call Settings

5.1. Called Stations

5.1.1. Call Button Assignment ♣

Register the station(s) to be called when Call button on a station is pressed.

Up to 20 Master Stations can be called simultaneously.

Caution

Do not register the same station multiply.

•Called Stations

Call Button Assignment

U = Unicast, M = Multicast
If designating "M", multicast IP addresses must be configured for the station(s).

	Number 3-5 digits	IPv4 Address 1.0.0.0-223.255.255.255	IPv6 Address 2000::0-3FFF:FFFF:FFFF:FFFF:FFFF:FFFF:FFFF:FFFF or FD00::0- FDEF:FFFF:FFFF:FFFF:FFFF:FFFF:FFFF:FFFF	Protocol
1				▼
2				▼
3				▼
4				▼
5				▼
6				▼
7				▼
8				▼
9				▼
10				▼
11				▼
12				▼
13				▼

■ Number

Description	Enter the station number.
Settings	3-5 digits
Default values	-

■ IPv4 Address

Description	Set the IPv4 address of the station.
Settings	1.0.0.0-223.255.255.255
Default values	-

■ IPv6 Address

Description	Set the IPv6 address of the station.
Settings	2000::0-3FFF:FFFF:FFFF:FFFF:FFFF:FFFF:FFFF:FFFF or FD00::0-FDFF:FFFF:FFFF:FFFF:FFFF:FFFF:FFFF:FFFF
Default values	-

■ Protocol (Video Door Station only)

Description	Select the communication protocol to make a call.
Settings	<ul style="list-style-type: none"> • U: Unicast transmission • M: Multicast transmission
Default values	-

Caution

When choosing Multicast, be sure to configure "2.4. Multicast Address (Video Door Station only)" ➤ [P.60](#).

5.1.2. Priority Setting

Priority Setting

Priority:

■ Priority

Description	Set the priority of a call when Call button is pressed.
Settings	<ul style="list-style-type: none"> • Normal • Priority • Urgent
Default values	Normal

5.2. Call Origination

•Call Origination

Call Acknowledged Settings

Ringback Tone:

Call Timeout [sec]: sec 10-600 sec, Infinite (No timeout)

Ringback Tone Count [time(s)]: 1-20 time(s), Infinite (Keep ringing)

Busy Tone:

Error Tone (Call failed):

5.2.1. Call Acknowledged Settings

■ Ringback Tone

Description	Select the ringback tone (tone heard at calling station when a call is placed).
Settings	<ul style="list-style-type: none"> • Call pattern 1 • Call pattern 2 • Call pattern 3 • Call pattern 4 • Call pattern 5 • Call pattern 6 • Tremolo sound • Busy tone • On-hold tone • Operation sound • Error sound • Sound registered in "3.1. Custom Sound Registry" ➤ P.71
Default values	Call pattern 1

■ Call Timeout [sec] ♦

Description	Set the call ring timer.
Settings	<ul style="list-style-type: none"> • 10-600 sec (by 1 sec) • Infinite: Ringing continues until the recipient responds
Default values	10-600 sec, 60 sec

■ Ringback Tone Count [time(s)]

Description	Set the count of ringback tone.
Settings	<ul style="list-style-type: none"> • 1-20 times • Infinite: Ringback tone continues until the recipient responds
Default values	Infinite

■ Busy Tone

Description	Select the tone that will be heard at the calling station when the called station is busy.
Settings	<ul style="list-style-type: none"> • Call pattern 1 • Call pattern 2 • Call pattern 3 • Call pattern 4 • Call pattern 5 • Call pattern 6 • Tremolo sound • Busy tone • On-hold tone • Operation sound • Error sound • Sound registered in "3.1. Custom Sound Registry" ➤ P.71
Default values	Busy tone

■ Error Tone (Call failed)

Description	Select the tone that will be heard when a call fails.
Settings	<ul style="list-style-type: none"> • Call pattern 1 • Call pattern 2 • Call pattern 3 • Call pattern 4 • Call pattern 5 • Call pattern 6 • Tremolo sound • Busy tone • On-hold tone • Operation sound • Error sound • Sound registered in "3.1. Custom Sound Registry" ➤ P.71
Default values	Error sound

6. Function Settings

6.1. Door Release Settings

Door Release Settings

Door Release Tone
 Door Release Operating Tone:

Door Release Authorization
 Authentication Key: 1-4 digits

Door Release Output Settings (same as Contact / Audio Output Settings)
When usage is set for 'Paging Control', 'Output time [msec/sec]' will be ignored.
 When usage is set for 'Contact Input Call / Communication State', 'Output time [msec/sec]' will be ignored.

Output Number	Output Specifications		Usage
	Output Time [msec / sec] *		
1	200-2000 msec	400 msec	

6.1.1. Door Release Tone

■ Door Release Operating Tone

Description	Set the tone that will be heard when the door is released.
Settings	<ul style="list-style-type: none"> • None • Call pattern 1 • Call pattern 2 • Call pattern 3 • Call pattern 4 • Call pattern 5 • Call pattern 6 • Tremolo sound • Busy tone • On-hold tone • Operation sound • Error sound • Sound registered in "3.1. Custom Sound Registry" ➤ P.71
Default values	Operation sound

6.1.2. Door Release Authorization

■ Authentication Key

Description	Set the Authentication key to allow control of the master station's door release output. Authentication key: When this matches the key of the other master station, control will be permitted.
Settings	1-4 digits
Default values	-

Point

"■Authentication Key" will be displayed as "••••" on the screen.

6.1.3. Door Release Output Settings (same as Contact / Audio Output Settings)

■ Output Time [msec / sec] ♦

Description	Set the output time of relay. The entry is identical to "■Output Time [msec / sec] ♦" > P.74. When the setting is changed, "■Output Time [msec / sec] ♦" > P.74 will be changed as well.
Settings	<ul style="list-style-type: none"> • 0 (Momentary): Delivers output while Master Station presses "Door Release" button. • 200-2000 msec (by 200 msec) • 3-300 sec (by 1 sec)
Default values	200-2000 msec, 400 msec

■ Usage

Description	Set the usage of relay output. The entry is identical to "■Usage" > P.74. When the setting is changed, "■Usage" > P.74 will be changed as well.
Settings	<ul style="list-style-type: none"> • Blank: Not used • Door Release: Delivers output to release the door. • Paging Control: Delivers output while paging the speaker of the main unit. When this is chosen, the set time by "■Output Time [msec / sec]" is unavailable. • Contact Input Call / Communication State: Delivers output during a call or communication triggered by the contact input.
Default values	Blank

6.2. Contact Input Call

6.2.1. Door Station Call Groups ♣

Register station(s) to be called when contact input is triggered.

Up to 20 Master Stations can be called simultaneously.

Up to nine groups of 20 may be configured.

Caution

Do not register the same station to one group multiply.

•Contact Input Call

Call Setting

Group List

[Group D01](#)
[Group D02](#)
[Group D03](#)
[Group D04](#)
[Group D05](#)
[Group D06](#)
[Group D07](#)
[Group D08](#)
[Group D09](#)

[Group D01] [Return to Top](#)

U = Unicast, M = Multicast
If designating "M", multicast IP addresses must be configured for the station(s).

	Station Number 3-5 digits	IPv4 Address 1.0.0.0-223.255.255.255	IPv6 Address 2000::0-3FFF:FFFF:FFFF:FFFF:FFFF:FFFF:FFFF:FFFF or FD00::0-FDFF:FFFF:FFFF:FFFF:FFFF:FFFF:FFFF:FFFF	Protocol
1				▼
2				▼
3				▼
4				▼
5				▼
6				▼
7				▼
8				▼
9				▼
10				▼

■ Station Number

Description	Enter the station number.
Settings	3-5 digits
Default values	-

■ IPv4 Address

Description	Set the IPv4 address of the station.
Settings	1.0.0.0-223.255.255.255
Default values	-

■ IPv6 Address

Description	Set the IPv6 address of the station.
Settings	2000::0-3FFF:FFFF:FFFF:FFFF:FFFF:FFFF:FFFF:FFFF or FD00::0-FDFF:FFFF:FFFF:FFFF:FFFF:FFFF:FFFF:FFFF
Default values	-

■ Protocol (Video Door Station only)

Description	Select the communication protocol to make a call.
Settings	<ul style="list-style-type: none"> • U: Unicast • M: Multicast
Default values	-

Caution

When choosing Multicast, be sure to configure "2.4. Multicast Address (Video Door Station only)" ➤ [P.60](#).

6.2.2. Door Station Call Group Assignment

Door Station Call Group Assignment

Input Number	Group Number	Priority
1	01	Normal

Call Acknowledged Settings

Ringback Tone: Call pattern 2

Call Timeout [sec]: 10-600 sec 60 sec 10-600 sec, Infinite (No timeout)

Ringback Tone Count [time(s)]: Infinite 1-20 time(s), Infinite (Keep ringing)

■ Group Number

Description	Set the group number to be called when the contact input is triggered. Select the group number set in "6.2.1. Door Station Call Groups ♣" ➤ P.82 .
Settings	01-09
Default values	-

■ Priority

Description	Set the priority of the call when the contact input is triggered.
Settings	<ul style="list-style-type: none"> • Normal • Priority • Urgent
Default values	Normal

6.2.3. Call Acknowledged Settings

■ Ringback Tone

Description	Select the ringback tone heard when the contact input is triggered.
Settings	<ul style="list-style-type: none"> • Call pattern 1 • Call pattern 2 • Call pattern 3 • Call pattern 4 • Call pattern 5 • Call pattern 6 • Tremolo sound • Busy tone • On-hold tone • Operation sound • Error sound • Sound registered in "3.1. Custom Sound Registry" ➤ P.71
Default values	Call pattern 2

■ Call Timeout [sec] ♦

Description	Set the call ring timer when the contact input is triggered.
Settings	<ul style="list-style-type: none"> • 10-600 sec (by 1 sec) • Infinite: Ringing continues until the recipient responds
Default values	10-600 sec, 60 sec

■ Ringback Tone Count [time(s)]

Description	Set the count of ringback tone.
Settings	<ul style="list-style-type: none"> • 1-20 times • Infinite: Ringback tone continues until the recipient responds
Default values	Infinite

6.3. Paging Settings

Paging Settings

Paging Pretone Setting

Pretone: ☒ ON ☐ OFF

Paging Output Setting

Paging Audio Output (same as Contact / Audio Output Settings):

☒ Built-in Speaker for communication and paging

☐ Audio Output for communication and paging

☐ Built-in Speaker for communication, Audio Output for paging

6.3.1. Paging Pretone Setting

■ Pretone

Description	Choose to enable the pretone function when the station is paged.
Settings	<ul style="list-style-type: none"> • ON • OFF
Default values	ON

6.3.2. Paging Output Setting

■ Paging Audio Output (same as Contact / Audio Output Settings)

Description	<p>Set how audio is to be delivered.</p> <p>The entry is identical to "■Audio Output" ➤ P.75. When the setting is changed, "■Audio Output" ➤ P.75 will be changed as well.</p>
Settings	<ul style="list-style-type: none"> • Built-in Speaker for communication and paging • Audio Output for communication and paging • Built-in Speaker for communication, Audio Output for paging
Default values	Built-in Speaker for communication and paging

6.4. Paging Output Setting

●Paging Output Setting

Paging Audio Output (same as Contact / Audio Output Settings)

[Paging Audio Output \(same as Contact / Audio Output Settings\):](#)

☒ Built-in Speaker for communication and paging
☐ Audio Output for communication and paging
☐ Built-in Speaker for communication, Audio Output for paging

6.4.1. Paging Audio Output (same as Contact / Audio Output Settings)

■ Paging Audio Output (same as Contact / Audio Output Settings)

Description	The settings for "■Audio Output" ➤ P.75 and "■Paging Audio Output (same as Contact / Audio Output Settings)" ➤ P.85 are shown.
Settings	<ul style="list-style-type: none"> • Built-in Speaker for communication and paging • Audio Output for communication and paging • Built-in Speaker for communication, Audio Output for paging
Default values	Built-in Speaker for communication and paging

6.5. E-mail Settings

Configure this section when e-mail notification of station operation is required.

When configuring this section, configure "2.2. DNS" ► [P.59](#).

6.5.1. Server Settings

■ SMTP Server

Description	Set the SMTP server. When choosing IPv4, enter IP address or the host name. When choosing IPv6, enter the host name.
Settings	1-255 alphanumeric characters
Default values	-

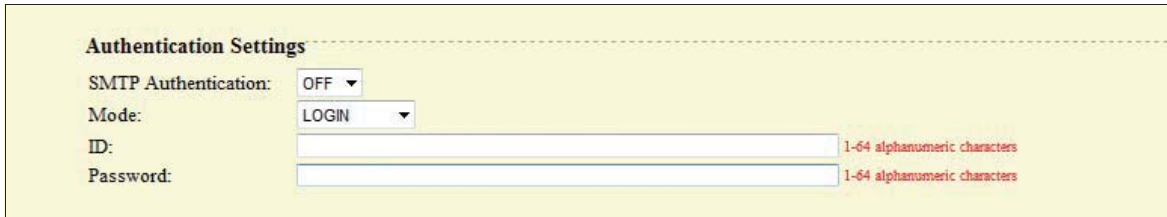
■ SMTP Port ♦

Description	Enter the port to be used for SMTP.
Settings	1-65535
Default values	25

■ SMTP Encryption

Description	Enter the SMTP encryption method.
Settings	<ul style="list-style-type: none"> • OFF • TLS • STARTTLS
Default values	OFF

6.5.2. Authentication Settings



Authentication Settings

SMTP Authentication: OFF

Mode: LOGIN

ID: 1-64 alphanumeric characters

Password: 1-64 alphanumeric characters

■ SMTP Authentication

Description	Enable SMTP authentication.
Settings	<ul style="list-style-type: none"> • OFF • ON
Default values	OFF

■ Mode

Description	Select the SMTP authentication mode.
Settings	<ul style="list-style-type: none"> • LOGIN • CRAM-MD5
Default values	LOGIN

■ ID

Description	Select the ID for SMTP authentication.
Settings	1-64 alphanumeric characters
Default values	-

■ Password

Description	Select the password for SMTP authentication.
Settings	1-64 alphanumeric characters
Default values	-

Point

■ Password" will be displayed as "....." on the screen.

6.5.3. E-mail Addresses

E-mail Addresses	
Destination 1:	<input type="text"/> 1-64 alphanumeric characters
Destination 2:	<input type="text"/> 1-64 alphanumeric characters
Destination 3:	<input type="text"/> 1-64 alphanumeric characters
Source Address:	<input type="text"/> 1-64 alphanumeric characters

■ Destination 1

Description	Set the e-mail address.
Settings	1-64 alphanumeric characters
Default values	-

■ Destination 2

Description	Set the e-mail address.
Settings	1-64 alphanumeric characters
Default values	-

■ Destination 3

Description	Set the e-mail address.
Settings	1-64 alphanumeric characters
Default values	-

■ Source Address

Description	Set the source e-mail address.
Settings	1-64 alphanumeric characters
Default values	-

6.5.4. E-mail Event Trigger

Set up which event triggers sending an e-mail message for each address in "■Destination 1 through ■Destination 3" ➤ [P.89](#).

E-mail Event Trigger

Event	Destination Address		
	(1)	(2)	(3)
Normal call	Disable ▼	Disable ▼	Disable ▼
Priority call	Disable ▼	Disable ▼	Disable ▼
Urgent call	Disable ▼	Disable ▼	Disable ▼
Call Failed	Disable ▼	Disable ▼	Disable ▼
Error Occurred	Disable ▼	Disable ▼	Disable ▼
Station Restart	Disable ▼	Disable ▼	Disable ▼
Periodic Log Transmission	Disable ▼	Disable ▼	Disable ▼
Periodic Log Transmit Time	00 ▼ Hour 00 ▼ Minute	00 ▼ Hour 00 ▼ Minute	00 ▼ Hour 00 ▼ Minute
Periodic Log Transmit Interval	1 day ▼	1 day ▼	1 day ▼

[UTF-8] used for 'Subject' encoding; the subject may be garbled depending on mail server.

Event	Subject Text 1-64 alphanumeric characters
Normal call	<input style="width: 90%;" type="text"/>
Priority call	<input style="width: 90%;" type="text"/>
Urgent call	<input style="width: 90%;" type="text"/>
Call Failed	<input style="width: 90%;" type="text"/>
Error Occurred	<input style="width: 90%;" type="text"/>
Station Restart	<input style="width: 90%;" type="text"/>
Periodic Log Transmission	<input style="width: 90%;" type="text"/>

■ Normal call

Description	An e-mail message will be sent when a normal call is made.
Settings	<ul style="list-style-type: none"> • Enable • Disable
Default values	Disable

■ Priority call

Description	An e-mail message will be sent when a priority call is made.
Settings	<ul style="list-style-type: none"> • Enable • Disable
Default values	Disable

■ Urgent call

Description	An e-mail message will be sent when an urgent call is made.
Settings	<ul style="list-style-type: none"> • Enable • Disable
Default values	Disable

■ Call Failed

Description	An e-mail message will be sent when a call fails.
Settings	<ul style="list-style-type: none"> • Enable • Disable
Default values	Disable

■ Error Occurred

Description	An e-mail message will be sent when a data communication error occurs.
Settings	<ul style="list-style-type: none"> • Enable • Disable
Default values	Disable

■ Station Restart

Description	An e-mail message will be sent when the station is restarted.
Settings	<ul style="list-style-type: none"> • Enable • Disable
Default values	Disable

■ Periodic Log Transmission

Description	System log will be regularly sent via e-mail.
Settings	<ul style="list-style-type: none"> • Enable • Disable
Default values	Disable

■ Periodic Log Transmit Time

Description	Set time of day to send the log via e-mail.
Settings	From 00:00 to 23:59
Default values	00:00

■ Periodic Log Transmit Interval

Description	Set how often the log will be sent via e-mail.
Settings	Every 1-7 days
Default values	1 day

■ Subject Text

Description	Set the subject of e-mail message for each trigger.
Settings	1-64 alphanumeric characters
Default values	-

Caution

UTF-8 encoding is used for the "■Subject Text." Depending on the e-mail client, the characters may appear incorrectly.

6.5.5. Additional Settings (Video Door Station only)

Additional Settings

Attach Image:

☐ Enable
 ☒ Disable

Attachment Image Filename:

[UTF-8] used for 'Attachment Image Filename' encoding; the filename may be garbled depending on mail server.

If set to [Enable], an image will be attached when sending "Normal Call", "Priority Call", or "Urgent Call".

1-64 alphanumeric characters

■ Attach Image

Description	Choose to attach an image file captured with Video Door Station camera to the e-mail message when a Normal/Priority/Urgent call triggers "6.5.4. E-mail Event Trigger" ➤ P.90.
Settings	<ul style="list-style-type: none"> • Enable • Disable
Default values	Disable

■ Attachment Image Filename

Description	Set the name of the image file when "■Attach Image" is enabled.
Settings	1-64 alphanumeric characters
Default values	-

Caution

UTF-8 encoding is used for the "■Attachment Image Filename" is UTF-8. Depending on the e-mail client, the characters may appear incorrectly.

6.6. CGI Integration

CGI integration allows 3rd party hardware / software to control basic functionality of the IX devices.

For details of CGI functionality, contact the local Aiphone representative.

•CGI Integration

CGI Functionality:

☐ Enable
 ☒ Disable

■ CGI Functionality

Description	Choose to enable CGI functionality.
Settings	<ul style="list-style-type: none"> • Enable • Disable
Default values	Disable

6.7. SIF Integration

SIF protocol allows event data to be sent directly to 3rd party hardware / software.

For details of SIF functionality, contact the local Aiphone representative.

SIF Integration

SIF Functionality: ☐ Enable ☒ Disable

SIF Communication Settings (sif.ini)

SIF Parameter Settings (sif_conf.ini)

■ SIF Functionality

Description	Choose to enable SIF functionality.
Settings	<ul style="list-style-type: none"> • Enable • Disable
Default values	Disable

6.7.1. SIF Communication Settings (sif.ini)

Description	Upload/Download SIF communication settings. Upload: Click <input type="button" value="Browse..."/> , select a file, and click <input type="button" value="Upload"/> . Download: Click <input type="button" value="Download"/> to save the file.
Settings	-
Default values	-

6.7.2. SIF Parameter Settings (sif_conf.ini)

Description	Upload/Download SIF parameter settings. Upload: Click <input type="button" value="Browse..."/> , select a file, and click <input type="button" value="Upload"/> . Download: Click <input type="button" value="Download"/> to save the file.
Settings	-
Default values	-

7. Station Hardware Settings

7.1. Volume Settings

•Volume Settings

Volume Settings

Transmit Volume:

Receive Volume:

Ringtone Volume:

7.1.1. Volume Settings

■ Transmit Volume

Description	Set the audio volume during a communication or while monitoring.
Settings	1 through 10
Default values	10

■ Receive Volume

Description	Set the reception volume during a communication or while paging. The volume for ringback tone will be changed as well.
Settings	1 through 10
Default values	10

■ Ringtone Volume

Description	Set the tone volume (ringtone, pretone).
Settings	0: Mute, 1 through 10
Default values	10

7.2. Communication Settings

•Communication Settings

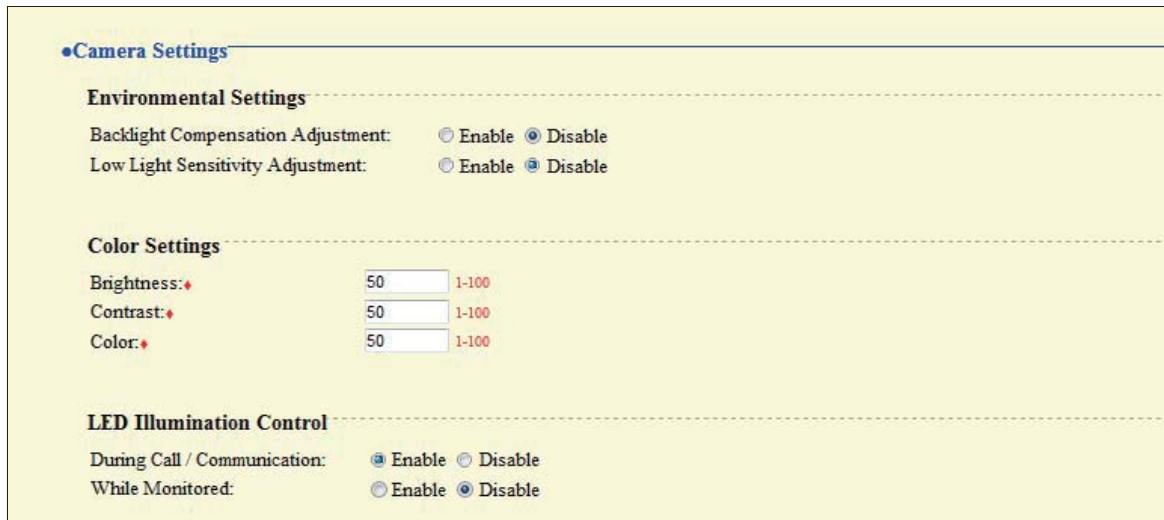
Talk Timeout [sec]: sec 30-600 sec, Infinite (No timeout)

■ Talk Timeout [sec] ♦

Description	Set the talk timeout.
Settings	<ul style="list-style-type: none"> • 30-600 sec (by 1 sec) • Infinite: Communication continues until the communication is terminated.
Default values	60 sec

7.3. Camera Settings (Video Door Station only)

Configure the settings for Video Door Station camera.



•Camera Settings

Environmental Settings

Backlight Compensation Adjustment: ☐ Enable ☒ Disable

Low Light Sensitivity Adjustment: ☐ Enable ☒ Disable

Color Settings

Brightness: 1-100

Contrast: 1-100

Color: 1-100

LED Illumination Control

During Call / Communication: ☒ Enable ☐ Disable

While Monitored: ☐ Enable ☒ Disable

7.3.1. Environmental Settings

■ Backlight Compensation Adjustment

Description	Enable the backlight compensation adjustment. When the "ADJUST" button of Master Station is pressed during a communication or while monitoring, the setting will be changed.
Settings	<ul style="list-style-type: none"> • Enable • Disable
Default values	Disable

■ Low Light Sensitivity Adjustment

Description	Enable the automatic low light sensitivity adjustment function when the ambient lighting is dark. When the "ADJUST" button of Master Station is pressed during a communication or while monitoring, the setting will be changed.
Settings	<ul style="list-style-type: none"> • Enable • Disable
Default values	Disable

7.3.2. Color Settings

Caution

If these settings are changed while video is displayed, the changes will not be reflected until the video is accessed again.

■ Brightness ♦

Description	Set the brightness of the picture.
Settings	1 (Dark) to 100 (Bright)
Default values	50

■ Contrast ♦

Description	Set the contrast of the picture.
Settings	1 (Weak) to 100 (Strong)
Default values	50

■ Color ♦

Description	Set the color of the picture.
Settings	1 (Weak) to 100 (Strong)
Default values	50

7.3.3. LED Illumination Control

■ During Call / Communication

Description	Activate LED illumination during communication when the ambient lighting is dark.
Settings	<ul style="list-style-type: none"> • Enable • Disable
Default values	Enable

■ While Monitored

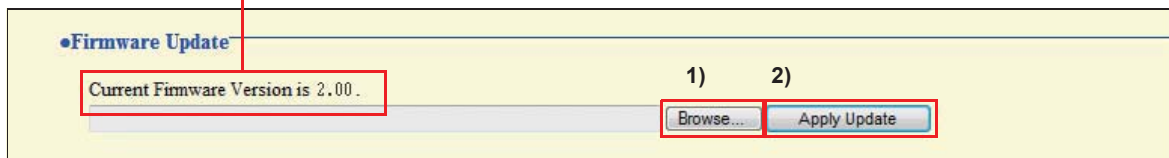
Description	Activate LED illumination while being monitored when the ambient lighting is dark.
Settings	<ul style="list-style-type: none"> • Enable • Disable
Default values	Disable

8. Maintenance

8.1. Firmware Update

Access "http://www.aiphone.net/" and download the latest version of the firmware.

The current version of the firmware is shown.



How to update the firmware

- 1) Click and select the firmware to be uploaded.
- 2) Click .

Caution

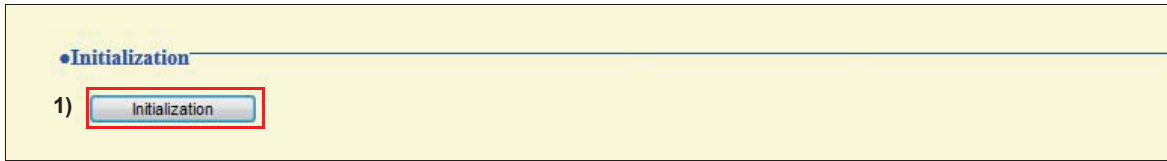
- If power is turned off while updating the firmware, the station may malfunction.
- The station will be inoperable while updating the firmware.
- When the firmware is updated, the station will automatically restart.

Point

If updating fails, repeat the procedure.

8.2. Initialization

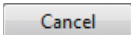
When initializing the station, all settings go back to the default values, and the system log is erased.

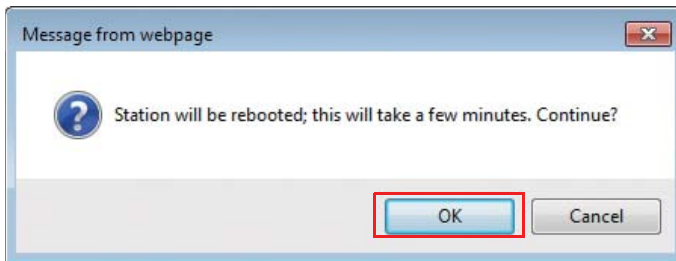


How to initialize the station

1) Click .

2) Click .

Click  to cancel the initialization.



Caution

- In some cases, it may take around 10 minutes for the station to start up after initialization.
The station will be inoperable until restarting is completed.
- If initialization fails, the message "Initialization failed" will be displayed, and the status indicator will flash red (Device failure). If this happens, retry the procedure.

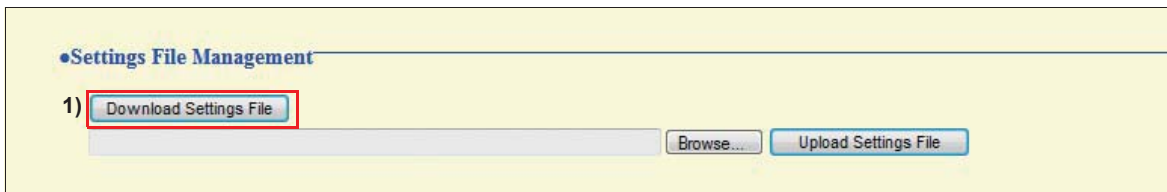
8.3. Setting File Management

Save the setting file so it can be used to restore the system.

Important

- When a setting is changed, store the setting file. With a saved setting file, the settings of a replaced station can easily be restored.
- Sound data registered in "3.1. Custom Sound Registry" ➤ P.71 and SIF uploaded in "6.7. SIF Integration" ➤ P.94 cannot be stored in this procedure. Save the data separately.

How to download the Settings File



1) Click **Download Settings File**.

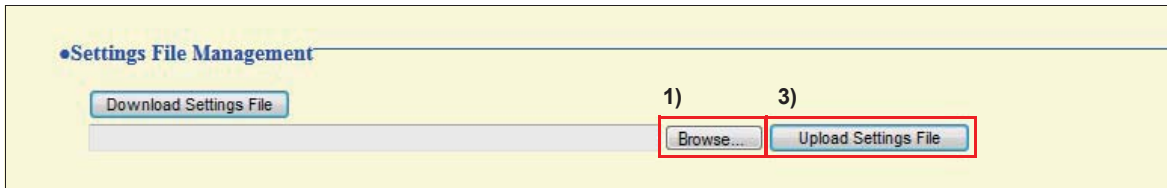
2) Click **Save**.



3) Specify the location to store the file.

The setting file will be given the name "GetConfig." Change the file name as necessary and save it.

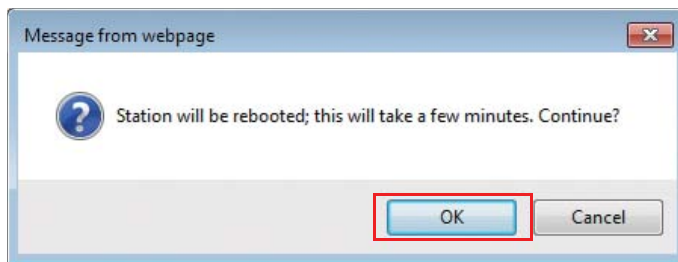
How to upload the Settings File



Important

Sound data and SIF data cannot be restored in this procedure. Upload the files in "3.1. Custom Sound Registry" ➤ [P.71](#) "6.7. SIF Integration" ➤ [P.94](#).

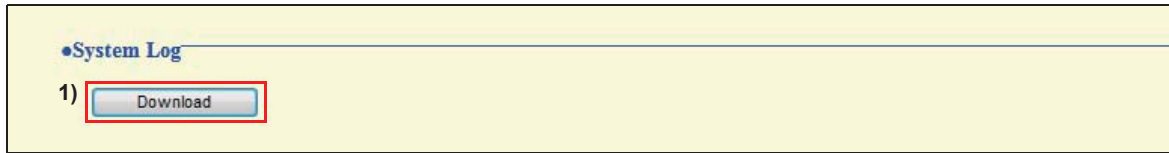
- 1) Click .
 - 2) Select the setting file to be uploaded, and click .
 - 3) Click .
 - 4) Click .
- Click to cancel the upload.



8.4. System Log

Obtain the system log to view the operation of the station.

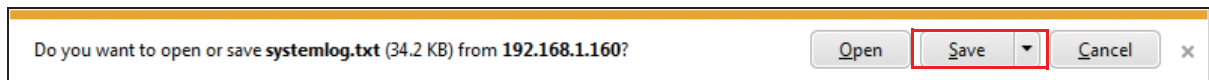
The log is mainly used for after-sales servicing.



How to store the system log file

1) Click .

2) Click .



3) Specify the location to store the file.

The data file will be given the name "systemlog.txt." Change the file name as necessary and save it.

9. Viewing video from Door Station with 3rd party products (ONVIF)

Video Door Station supports the ONVIF interface standard "ONVIF profile S."

View video from Door Station camera with a 3rd party product supporting the ONVIF specification. (For products with confirmed interoperability, refer to our Web site "http://www.aiphone.net/".)

Important

Video from the Door Station camera cannot be viewed simultaneously by more than two products from other manufacturers.

Configuring the station so video can be viewed with a product by another manufacturer

- 1) Select "Enable" for "■Second Video Encoder" ➤ [P.63](#).

Caution

Set up "2.5.2. Video Encoder 2" ➤ [P.63](#) according to the specification of the product.

- 2) Register Video Door Station on the product.
 - Enter the authentication ID and password given below:
Authentication ID: aiphone, Password: aiphone
 - For how to register, refer to the instruction manual of the product to be registered.



<http://www.aiphone.net/>

AIPHONE CO., LTD., NAGOYA, JAPAN

Issue Date : Nov. 2014 FK2127 (A) P1114 SQ 56141