

SYSTEM/MODEL: AP-M

MODIFICATION: LED monitoring indicator on a sub station

DIFFICULTY LEVEL: 5 - Hard - Circuit creation and internal addition.

COMPONENTS REQUIRED

1. LED: General purpose.
2. Resistor: 600 ohm, 1/4 W, One per master, one per sub

INSTR/OPERATIONS

1. Install LED and resistor in the sub station as shown.
2. Install resistor in the master station as shown on the schematic.
3. Three wires must be run from master to sub; one twisted pair and one individual wire (or two twisted pairs).
4. LED at sub station will light when master selects that sub station.
5. Do not monitor more than two sub stations at one time.

REFERENCE DRAWING #: 0698-004, AS3A&381-004

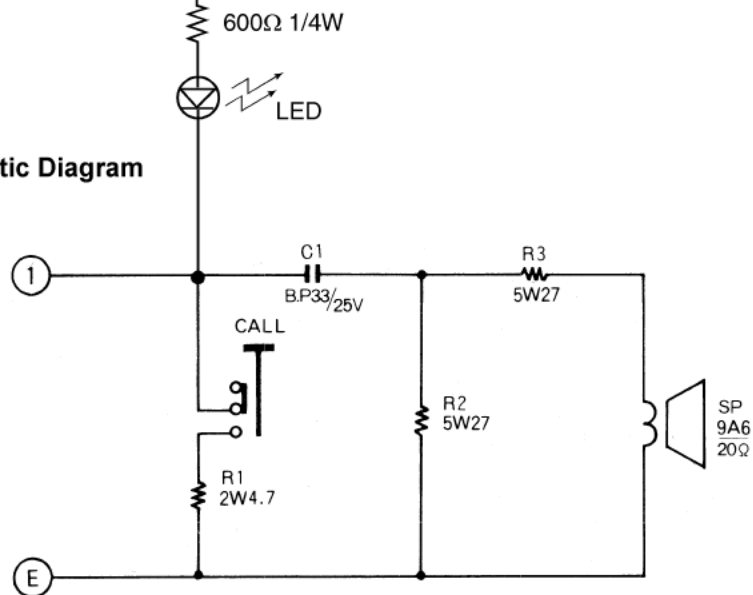
Aiphone's product warranty applies to products properly modified using these instructions.
However, if a unit is damaged as a result of improper modification, the warranty does not apply.

MODIFICATION DIAGRAM

MONITORING LED AT SUB STATION (Part 1 of 2)

New wire from sub to AP-M Master
(point 6 on PC-380).

AS-3A Schematic Diagram



NOTES:

1. Add LED and resistor as shown off of the point indicated.
2. Use a general purpose LED and a 600 ohm resistor.
3. Physical placement of the LED is up to the installer, since there is no predesigned provision for it on the unit itself.

MONITORING LED AT SUB STATION (Part 2 of 2)

AP-10M Schematic Diagram

