

**SYSTEM/MODEL:** AP-M

**MODIFICATION:** Using an LE series sub station with the AP-M system

**DIFFICULTY LEVEL:** 4 - Moderate/hard - Internal connection or component addition.

**COMPONENTS REQUIRED**

1. Resistors: 25 to 37 ohm, 5W, two each per sub station.
2. Resistor: 5 ohm, 2W, one per sub station (LE-A/AN only)

**INSTR/OPERATIONS**

1. Replace and add resistors as shown on the following schematics.
2. NOTE: If PRIVACY is required on a sub station with the AP-M, use the LE-AN (surface mount) or LE-BN (semi-flush mount) sub stations, and perform this modification.

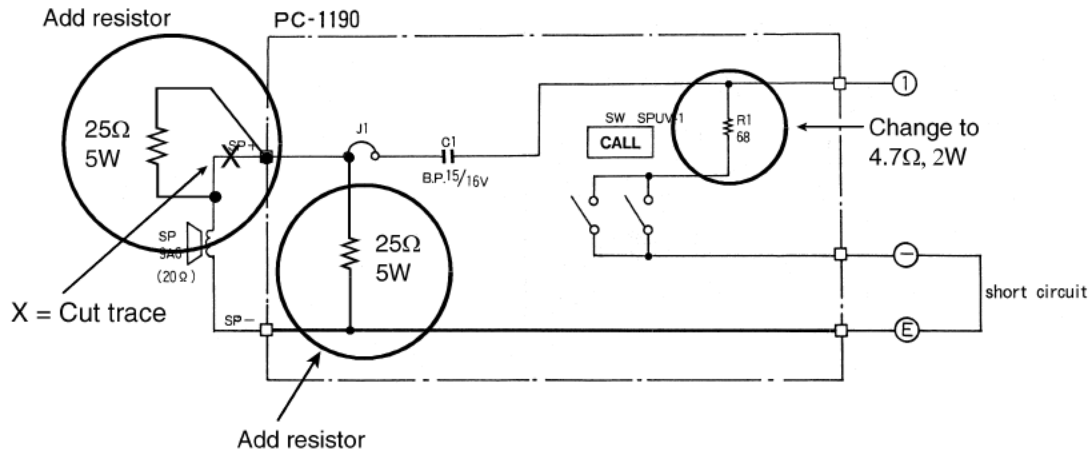
**REFERENCE DRAWING #:** 0698-006, 333-006

Aiphone's product warranty applies to products properly modified using these instructions.  
However, if a unit is damaged as a result of improper modification, the warranty does not apply.

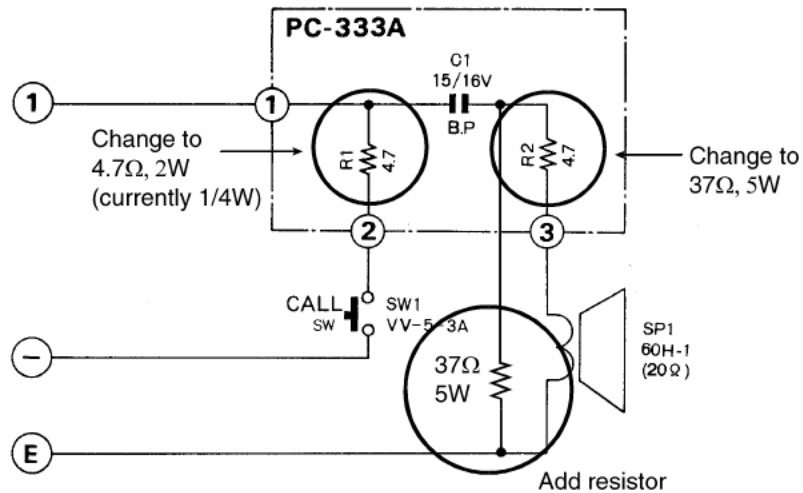
## MODIFICATION DIAGRAM

### LE-SERIES SUB STATION WITH AP-M SYSTEM

■ LE-A



LE-D Door Station (PC-333A)  
LE-DA Door Station (PC-408B, same as below)



#### NOTES:

1. Add resistors as shown above.
2. Jumper between E and - terminals must remain attached.
3. Volume level to sub stations will be lower than the volume to a horn speaker.