



# TD-H Series

Selective Call Intercom System



For Commercial and Industrial Applications

## Features & Benefits

### • Variety of stations

Mix and match up to 25 stations to create the desired communication solution

### • Access control

Select up to 2 door stations to have entry security in addition to communication

### • Paging and talkback

Page individual zones or all zones at once, both with talkback capability

### • Internal communication

Call and receive calls from any connected master station (multi-talk paths allowed)

### • Handset page button

Prevent accidental paging with the strategic location of the page button (also used for door release)

### • Complements phone system

Improve communication with quick access paging, a feature telephones do not offer

### • Great for noisy environments

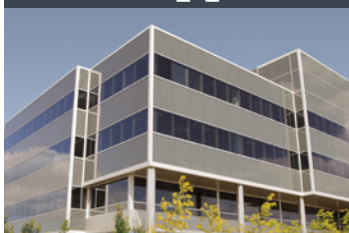
Use the system's speakers and amplifiers to produce loud and clear announcements in any environment

### • Reliable and designed to last

Install the system and have guaranteed trouble-free use for years to come!



## Ideal Applications



**Offices**



**Retail Outlets**



**Warehouses**

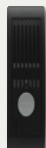


**Industrial Facilities**

## Components - Mix and match up to 25 stations

A maximum of 2 door stations and 12 paging adaptors are allowed in a system configuration

### Optional Door Stations - Install up to 2 (counts toward total capacity of 25 stations)



#### AX-DM

Audio Door Station

- Plastic cover
- Mullion surface mount
- 6-5/16" H
- 1-11/16" W
- 7/8" D



#### IF-DA

Audio Door Station

- Plastic cover
- Surface mount
- 5-1/8" H
- 3-7/8" W
- 1-1/8" D



#### IE-JA

Audio Door Station

- Stainless steel faceplate
- Flush mount
- Fits 2-gang box
- 4-1/2" H
- 4-9/16" W
- 2-1/2" D (back box depth)



#### IE-SS/A

Audio Door Station

- Stainless steel
- Flush mount
- Fits 2-gang box
- 4-3/4" H
- 4-3/4" W
- 2-1/2" D (back box depth)



#### IE-SSR

Audio Door Station

- Red mushroom call button
- Stainless steel
- Flush mount
- Fits 2-gang box
- 4-3/4" H
- 4-3/4" W
- 2-1/2" D (back box depth)



#### IE-SSV

Audio Door Station

- Built-in CCTV camera
- Stainless steel
- Flush mount
- Fits 2-gang box
- 4-3/4" H
- 4-3/4" W
- 2-1/2" D (back box depth)

### Door Station Adaptor

(1 required per door station)



#### DE-UR

Door Station Adaptor

- Allows door station to be added for access control
- Activates door release
- 6-5/16" H
- 5-7/8" W
- 1-3/4" D

### Master Stations - Install up to 25 (up to 23 if using 2 door stations or up to 11 if using 2 door stations and 12 paging adaptors)



#### TD-1H/B\*

1-Call Audio Master Station

- Handset for privacy

#### TD-1HL\*

(not shown)  
1-Call Audio Master Station

- Handset for privacy
- Call LED
- Tone-off switch



#### TD-3H/B

3-Call Audio Master Station

- Handset for privacy

#### TD-3HL

(not shown)  
3-Call Audio Master Station

- Handset for privacy
- Call LED
- Tone-off switch



#### TD-6H/B

6-Call Audio Master Station

- Handset for privacy

#### TD-6HL

(not shown)  
6-Call Audio Master Station

- Handset for privacy
- Call LED
- Tone-off switch



#### TD-12H/B

12-Call Audio Master Station

- Handset for privacy

#### TD-12HL

(not shown)  
12-Call Audio Master Station

- Handset for privacy
- Call LED
- Tone-off switch



#### TD-24H/B

24-Call Audio Master Station

- Handset for privacy

\*TD-1H/B and TD-1HL cannot be used for door answering

**Dimensions:** 8-1/4" H (all) 3-15/16" W (all) 2-7/8" D (TD-nH/B / nHL n = 1, 3, 6, or 12) 3-1/4" D (TD-24H/B)

# Components - Mix and match up to 25 stations ▶ A maximum of 2 door stations and 12 paging adaptors are allowed in a system configuration

## Paging Adaptors - Install up to 12 (counts toward total capacity of 25 stations)



**PD-1\***  
Zone Paging Adaptor  
2" H 3-9/16" W 5-7/16" D



**PD-2\***  
Zone Paging / Talkback Adaptor  
2" H 3-9/16" W 5-7/16" D

\*One paging amplifier required for each PD-1 / PD-2 - use T3115BGM, T3130BGM, DMA2060, or DMA2120.

## Paging Speakers - Install number of speakers needed (based on amplifier wattage)



**AH-16TN**  
Horn Speaker  
• 8Ω, 25/70V, 16W  
• Indoor or outdoor use  
• Surface mount  
Bell Diameter: 8-1/4"  
Depth: 9"



**AH-32TN**  
Horn Speaker  
• 8Ω, 25/70V, 32W  
• Indoor or outdoor use  
• Surface mount  
Bell Diameter: 8-1/4"  
Depth: 9"



**SP-2570N**  
Ceiling Speaker  
• 8Ω, 25/70V, 4W  
• Indoor use  
• Flush mount  
Diameter: 12-7/8"  
Baffle Diameter: 8"

## Paging Amplifiers (1 required per paging adaptor)



**DMA2120**  
120W Paging Amplifier  
4" H 10-3/4" W 11" D



**DMA2060**  
60W Paging Amplifier  
4" H 10-3/4" W 11" D



**T3130BGM**  
30W Paging Amplifier  
3-1/2" H 10-1/2" W 9-1/2" D



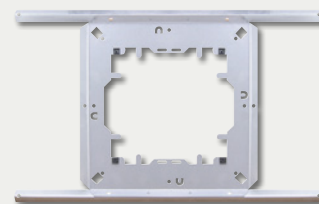
**T3115BGM**  
15W Paging Amplifier  
3-1/2" H 10-1/2" W 9-1/2" D

## Power Supply 1 required per system



**PS-1225UL**  
12V DC Power Supply  
6-9/16" H 3-9/16" W 2-1/16" D

## Accessories



**SSB-2**  
Ceiling Support  
Bracket for SP-2570N



**HID-SS**  
Card Access  
Station with  
HID® ProxPoint®  
Plus Proximity  
Card Reader  
(requires a 3rd party host)



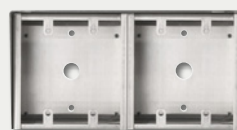
**ICP-BR**  
Brass  
Faceplate  
for IE-JA



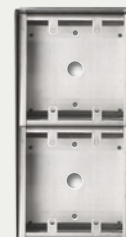
**ICP-AB**  
Antique Brass  
Faceplate  
for IE-JA



**SBX-2G**  
Surface Mount  
Box for IE-JA,  
IE-SS/A, IE-SSR,  
or IE-SSV



**SBX-2BH**  
Horizontal Surface  
Mount Box for HID-SS  
and one IE-JA, IE-SS/A,  
IE-SSR, or IE-SSV



**SBX-2BV**  
Vertical Surface  
Mount Box for  
HID-SS and one  
IE-JA, IE-SS/A,  
IE-SSR, or IE-SSV



**TDW-nA**  
Terminal Box for TD-nH/B  
(n=1, 3, 6, 12 or 24)



**RY-AC/A**  
External Signaling Relay

## Specifications

<b>Power Source</b>	12V DC - use PS-1225UL	<b>Communication</b>	Handset (full-duplex)
<b>Consumption</b>	Max. 70mA per station	<b>Door Release</b>	N/O 30V AC/DC, 1A (at DE-UR)
<b>Wire Type</b>	Door Station to DE-UR: 2 cond., overall shield - use Aiphone #822202 DE-UR to Master Station: 6 cond., non-shielded - use Aiphone #822206 TD-1H/B / TD-1HL to another Master Station: 6 cond., non-shielded - use Aiphone #822206 TD-3H/B / TD-3HL / TD-6H/B / TD-6HL: 10 cond., overall shield - use Aiphone #822210 TD-12H/B / TD-12HL / TD-24H/B*: 16 cond., non-shielded - use Aiphone #812216 *Two runs of 812216 are required for full functionality of the TD-24H/B		
<b>Wiring Distance</b>	Door Station to DE-UR: 500'(22AWG) 1,200'(18AWG) Between Masters: 2,000'(22AWG) 4,800'(18AWG)		



LOCAL AIPHONE EXPERTS ARE HERE TO HELP.  
**CONTACT US TODAY!**



TD-H Series  
Brochure  
10/2013



ISO-14001 Certified



Aiphone Co. Ltd.

ISO 9001:2008 Certified



Aiphone Corp.

Deming Prize



Aiphone Co. Ltd.